

## Semantic data mapping technology to solve semantic data problem on heterogeneity aspect

Arda Yunianta <sup>a,b,1,\*</sup>, Omar Mohammed Barukab <sup>a,2</sup>, Norazah Yusof <sup>a,3</sup>, Nataniel Dengen <sup>b,4</sup>,  
Haviluddin <sup>b,5</sup>, Mohd Shahizan Othman <sup>c,6</sup>

<sup>a</sup> Faculty of Computing and Information Technology, King Abdul Aziz University, Rabigh, Saudi Arabia

<sup>b</sup> Faculty of Computer Science and Information Technology, Mulawarman University, Indonesia

<sup>c</sup> Faculty of Computing, University Teknologi Malaysia, Malaysia

<sup>1</sup> ayunianta@kau.edu.sa \*; <sup>2</sup>obarukab@gmail.com; <sup>3</sup>norazah64@gmail.com; <sup>4</sup>ndengen@gmail.com;

<sup>5</sup>haviluddin@gmail.com; <sup>6</sup>shahizan@utm.my;

\* corresponding author

---

### ARTICLE INFO

#### Article history:

Received November 15, 2017

Revised December 17, 2017

Accepted December 18, 2017

---

#### Keywords:

Ontology

Education domain

Semantic approach

Heterogeneity aspect

Mapping technology

---

### ABSTRACT

The diversity of applications developed with different programming languages, application/data architectures, database systems and representation of data/information leads to heterogeneity issues. One of the problem challenges in the problem of heterogeneity is about heterogeneity data in term of semantic aspect. The semantic aspect is about data that has the same name with different meaning or data that has a different name with the same meaning. The semantic data mapping process is the best solution in the current days to solve semantic data problem. There are many semantic data mapping technologies that have been used in recent years. This research aims to compare and analyze existing semantic data mapping technology using five criteria's. After comparative and analytical process, this research provides recommendations of appropriate semantic data mapping technology based on several criteria's. Furthermore, at the end of this research, we apply the recommended semantic data mapping technology to be implemented with the real data in the specific application. The result of this research is the semantic data mapping file that contains all data structures in the application data source. This semantic data mapping file can be used to map, share and integrate with other semantic data mapping from other applications and can also be used to integrate with the ontology language.

Copyright © 2017 International Journal of Advances in Intelligent Informatics.

All rights reserved.

---

### I. Introduction

The rapid development of applications and systems is used to facilitate digital and online activities [1-5]. Every application is develop for specific purposes based on function and feature that included on that applications [6]. Furthermore, the diversity of applications developed with different programming language, applications/data architectures, database system and representation of data/information leads to heterogeneity problem [5, 7-12]. In many aspects of heterogeneity, heterogeneity of data representation in term of semantic aspect is become more challenge in current days [13, 14].

The heterogeneity of data is a common phenomenon in distributed information sources and is growing with the development of system and applications that have created a huge amount of data and information [8, 9]. Utilization of data to share and integrate the data raises the problem inside the implementation process problem [3, 7, 15-18]. Several problems inside the data are about non-standardization of data, data with different representation, data conflicts, and data with semantic relation aspects [13].

This research is focuses on the three aspects problem inside the heterogeneity of data. The first problem is about data with different representation, this problem is related with the second problem

about semantic relationship aspect on data sharing and integration approach. There are two possibilities things can be happen on semantic aspects, the first is data that has same meaning with different representation name and the second is the data that has different meaning with the same representation name. As an example, inside education domain between two learning applications, they store the information about student's data. There are two possible conditions that happen with the semantic aspects problems. The first is the same student's data that stored in one application using learners name and the other application using pupil's name. The second is the different student's data (undergraduate and postgraduate students) stored in one application using student name and also the other application using the same student name. From this example, if this problem cannot be solved then it causes a third problem about data conflict.

This research is the extended paper and to be continuation of previous research about semantic data mapping process to handle semantic aspect problem inside the data heterogeneity phenomenon [3]. There are three main differences between the previous papers with the current research; the first difference is in the previous research only conducted analysis and comparison of the five existing semantic data mapping tools. Furthermore, in this research is complete it until eleven existing semantic data mapping tools. The second difference is about the number of analysis criteria while on the previous paper is using six criteria's compare with this research, the analysis of the current semantic data mapping tools is using five different criteria's. The third difference is in the previous research [3], the implementation of semantic data mapping are implemented on student grading system, however, in this research, the implementation of the semantic data mapping is on another application named question bank system.

The one of the best solution to solve heterogeneity data problem specific on semantic aspect is using semantic data mapping process [10, 19-22]. The main proses inside semantic data mapping process is to generate the representation of data format from data sources and transform into XML data format using semantic perspective [23-25]. This process is also an important process in the implementation of data integration technology [26]. The semantic data mapping process is the standardization and mapping process to produce uniformity between data with various data representation, heterogeneity format data and different semantic aspect between applications in the different data sources [27-29]. In the current days, there are a lot of technologies and tools in term of semantic data mapping process, and this research is to compare and analyze the existing semantic data mapping technology and tools based on several criteria's [23, 24, 30-49].

In this paper, there are several parts to complete this research. The first part is to compare and analyze existing semantic data mapping tools and finally come out with the conclusion of the suitable semantic data mapping tools that used in this research. The second part is the detail explanation and overview of the semantic data mapping tool that used in this research. Finally, in the third part is the implementation of semantic data mapping tool with specific application as a case study of this research.

## II. Method

The semantic data mapping technology is related to the technique and implementation of the tools. The aim of this technology is the standardization and mapping process to generate uniformity between data with various data representation, heterogeneity data format and different semantic aspects between applications on the different data sources. There are a lot of existing techniques and tools for conducting semantic data mapping processes in recent years [23, 24, 30-49]. However, in this section there are two main steps conducted for the research. The first step is to compare existing semantic data mapping tools and technologies. The second step is to analyze the suitable semantic data mapping tools that implemented in the next section.

### A. Comparison of Semantic Data Mapping Technology

#### 1) Virtuoso RDF Views

Virtuoso's RDF View [44] is the ODBC/JDBC extraction data that provide result as a DAV repository, SOAP and WS\* protocol endpoints. Virtuoso also provide SPARQL inside the SQL query, this can be implemented to the oracle RDF\_MATCH function. This tool is come out with the free open source version and commercial version. In the license version is able to combine a hybrid database engine with the RDF triple storage. This tool has graphical user interface to declare the

mapping process. However this feature is only for the virtuoso database and cannot used in others relational DBMS.

#### 2) R2O

R2O aims to extract the information inside database to be RDF format files or ontology language using OWL format. The extraction process is to produce a standard format from different database representation format to be used in the ontology language. There are three main layers on the R2O mapping architecture they are implementation, formalism and modeling layer. The first layer is the implementation layer that related with the SQL, database system and ontology implementation. The second layer is the formalism layer; the purpose of this layer is to handle relational model and formal ontology model. The third layer is the modeling layer that related with the entity-relationship model and conceptual ontology model [30, 36].

#### 3) ODEMapster

The ODEMapster is able to map all instances inside relational database to produce semantic we instances based on all description inside R2O document. There two main execution models inside the ODEMapster, the first model is a query-driven upgrade (on-the-fly query translation) and the second model is the massive upgrade batch process to generate all semantic web individuals from the data sources [36, 50]. The big difference from this two models is on the semantic repository. The first model, clients can be directly accessible to the data source using query processor, and in the second model, clients access the data source through repository generation to generate from the semantic repository.

#### 4) Dartgrid

Dartgrid is the semantic query system to support the building process on the large-scale ontology-based database virtual organization (DB-VO) using grid as the platform. There are three main technical characteristics in the Dartgrid as a referential implementation in the OntoVO model [32, 33, 35]. The first characteristic is the development process on Globus 3.0 to construct VO in grid computing research area. The second characteristic is about RDF, the standard data model to defining protocols in the semantic web. The third characteristic is the ontologies itself, Dartgrid used ontologies to comply with the semantic and syntax of OWL, the standard ontology description language that produce by W3C. Dartgrid help data provider to conduct semantic data mapping process from relational schema in the data source into the shared ontology.

#### 5) RDB2Onto

The main problem that tried to solve RDB2Onto is about conversion of the RDB data to the ontology data when they want to create web content based on the semantic web technologies such as OWL files. RDB2Onto is the simplification solution to extract data/information from relational database and produce RDF/OWL XML template using SQL syntax query [38]. RDB2 Onto get two inputs from relational database and RDF/OWL SQL query, then from these inputs will process into three steps using SQL query execution, template filled in with data from RDB and storage of RDF/OWL data. Finally, the output of this process is the ontology data.

#### 6) DB2OWL

The DB2OWL is to generate data from relational database into OWL-DL ontology language. There are two main steps in the semantic data mapping process inside DB2OWL [37]. The first step is to read and extract all database schemas inside data sources; all schemas are included table name, column structures and all constraints inside database. The second step is to convert directly to the ontology language, contents inside the ontology language includes class name, data property, object property and semantic relationship in the ontology language.

#### 7) Asio SBRD

The core component inside the SBRD-Asio is the *automapper* components that extract data from relational database [41]. The component *automapper* use another input from ontology mapping (OWL) to produce two results, they are data source ontology (OWL) and mapping instance data and rules. SBRD itself is the semantic bridge for relational that used to communicate with the relational database and mapping instance data and rules. To get specific result this tool using SPARQL query that located inside semantic query decomposition (SQD) component.

8) *Triplify*

Triplify is a semantic data mapping tool to extract linked data from relational database based on mapping HTTP-URI requests onto relational database queries [42]. Triplify is working between data source and web server. The main purpose of the Triplify is to retrieve the valuable information from data source and convert the query results into the RDF, linked data, and JSON format. Triplify can be implemented into the all relational database and PHP as a programming language in the web applications.

9) *METAmorphosis*

METAmorphosis comes with two main layers, the first layer is mapping and the second layer is template [31]. There are two kinds of problems that can handle by METAmorphosis related with the data inside the data sources. The first is the data that stored with the RDF triples, which can query the data directly using RDF way. The second is the basic database implementation with the classic relational schema and there is some mapping to the RDF format.

10) *Iconomy*

Iconomy extract the data from relational database and synchronize with the ontology schema to create new ontology language [40, 48]. The motto if the iconomy is a simple and powerful tool to extract relational data into the semantic entities with user-friendly interface. There are several abilities inside the iconomy such as check consistency, decrypt scrambled, load any ontology, create simple SPARQL queries and configure built-in reasoned. Iconomy provides advanced options to create and synchronize the ontology to and from any relational database.

11) *D2RQ Platform*

The D2RQ is the one of the favorite semantic data mapping tool because D2RQ is a free semantic data mapping tool. D2RQ has several abilities such as extract and integrate data from more than one data sources, support Jena and RDF dump, can provide semantic data mapping files in turtle format, and working in the HTTP protocol using D2R server [23-25]. D2RQ also provide automatic and manual mapping so in that way users are able to customize the semantic data mapping files to adjust with the other semantic data mapping files.

12) *Ultrawrap*

Ultrawrap created since 2009 with the specific purpose to synthesize the ontology language from SQL schema inside database system and provides SPARQL queries [46]. Ultrawrap extract data from data sources that has triple-view or SQL schema format. On 2013 Ultrawrap enhanced and evaluated using two existing benchmark suites [51]. There are four main components in the Ultrawrap semantic data mapping tool. The first component is the translation of SQL schema, the second component is the creation of an intentional triple table, the third component is the translation of SPARQL queries, and the fourth component is the native SQL query optimizer.

13) *Owlifier*

The purpose of the Owlifier is to create ontology knowledge from spreadsheets data such as Microsoft Excel, apple numbers, and open office spreadsheet [52]. There are four important components contained inside Owlifier to convert spreadsheet data into the ontology knowledge. The first component is the text file of ontology definitions (blocks) that will get the spreadsheet data. The second component is the OQL ontology provider to convert the spreadsheet data into ontology language. The third component is the ontology reasoned as a facilitation to measure the ontology knowledge. The fourth component is the OWL import that has function to generate and import others ontology language to integrate with the spreadsheet data.

14) *RDOTE*

RDOTE is the semantic data mapping tool to convert data from multiple relational database into different ontology knowledge and integrate them into single ontology knowledge. There two main purposes of the RDOTE, the first are the ability of RDOTE to quick instantiate ontology knowledge with the real data this process can east implementation with large ontology dataset. The second is ability to transform datasets currently residing in the relational database into semantic web data through a graphic user interface [53]. On 2013 RDOTE become more complex and complete with adding several ability and process such as ontology reader, RDB reader, mapping process and ontology writer [49].

*B. Analyze The Suitable Semantic Data Mapping Tool*

From comparison activity, the next step is to analyze the suitable semantic data mapping tool to be implemented in this research. The analyzing of the existing semantic data mapping tools is to evaluate and determine the best semantic data mapping tools that used in this research. In this part, researchers analyze fourteen semantic data mapping tools based on five criteria's. The first criteria is based on data sources, the second criteria is in term of ease of use, the third criteria in term of mapping process, the fourth criteria is about paid or free tools, and the fifth criteria is in term of multisource support. Detail analysis and comparison of fourteen existing semantic data mapping tools with five criteria's can be seen on Table 1.

Table 1. Analysis and Comparison of Existing Semantic Data Mapping Tools

No	Mapping Tools	Data Sources	Easy to Use	Mapping Process	Tools license	Support multisource
1	Virtuoso RDF Views	All SQL-DB	✓	Auto & manual	Paid	Yes
2	R2O	All SQL-DB	X	Auto & manual	Paid	Yes
3	ODEMapster	MySQL, Oracle	✓	manual	Free	No
4	Dartgrid	All SQL-DB	✓	Auto	Paid	Yes
5	RDB2Onto	All SQL-DB	X	Auto	Free	No
6	DB2OWL	MySQL, Oracle	X	Auto	Paid	No
7	Asio SBRD	All SQL-DB	✓	Auto	Paid	Yes
8	Triplify	All SQL-DB	X	manual	Free	No
9	METAmorphosis	All SQL-DB	✓	manual	Free	No
10	Iconomy	All SQL-DB	✓	Auto & manual	Paid	Yes
11	D2RQ Platform	All SQL-DB	✓	Auto & manual	Free	Yes
12	Ultrawrap	All SQL-DB	X	Auto & manual	Paid	Yes
13	Owlifier	Spreadsheet data	✓	Auto & manual	Paid	No
14	RDOTE	MySQL, Oracle	✓	Auto & manual	Free	Yes

From comprehensive comparison and analysis of fourteen existing semantic data mapping tools, this research concluded that D2RQ is the suitable semantic data mapping tools based on several considerations. The first is because of D2RQ support data mapping from all SQL database. The second reason is in term of easy to use with simple steps processes. The third is because of this tool support automatic and manual semantic data mapping process, so semantic data mapper able to edit, customize and adjust to integrate with others files and sources. The fourth reason is because of this tool is free license, no need to pay. The last reason is because of this tool support multi-sources.

**III. Results and Discussion**

The power of D2RQ tool can produce four different results. The first result, D2RQ is able to provide web access using HTTP protocol this is because of D2RQ tool has D2R server. The second result is triple store using RDF dump library [23-25]. The third one is the ability of D2RQ to communicate with local java application using Jena/sesame library. The last one of the ability D2RQ is to provide D2RQ mapping files that can collaborate and used in ontology language. The detail about D2RQ architecture can be seen on Fig. 1.

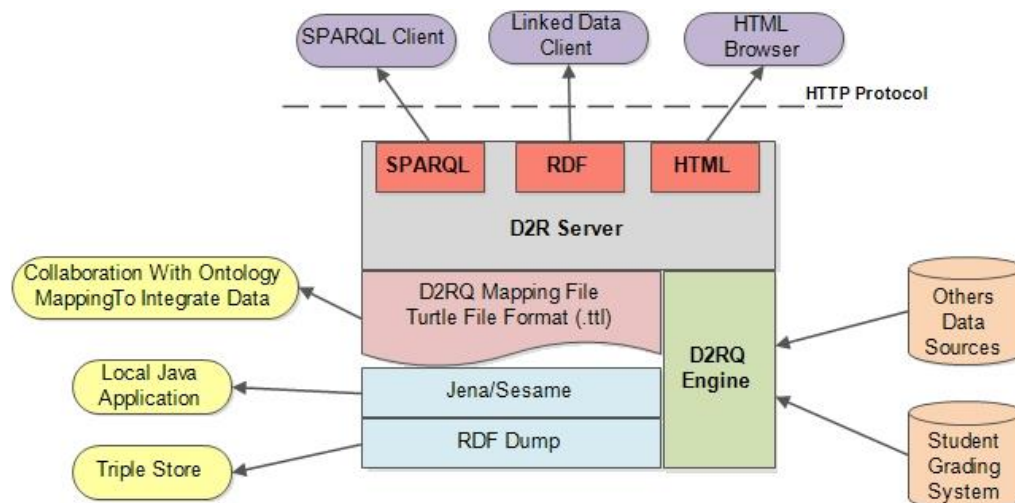


Fig. 1. D2RQ Architecture [16]

This research aims to produce D2RQ semantic data mapping file that will be used to integrate with other D2RQ mapping files and also can be used to integrate with the ontology language. There are two simple steps to conduct semantic data mapping process using D2RQ, the first step is to prepare data source that will map in this research and the second step is using D2RQ to produce the semantic data mapping file. The semantic data mapping file is a RDF document format written in turtle syntax. The mapping process is using D2RQ namespace that is the domain of the mapping to guarantee the uniqueness of identifier. The namespace is written like uniform resource locator (URL) such as “<http://www.semanticmapping.edu/exercise/qbs>”. In this section will be discussed the implementation of semantic data mapping tool in the Question Bank System (QBS).

#### A. Prepare the Question Bank System (QBS) Data

Question bank system contains information about learning outcomes. Question bank system is using Oracle as a database system to implement the data design schemas. Learning outcomes information is a part of course outline in subject course. In course outline, there are some information about subject course guideline. Some information in course outline there are course learning outcomes, programme learning outcome, assessment task, student learning time, weekly schedule, and grading method. Information about weekly schedule stored in the table *weeklySchedule*, table *weeks* and table *wsWeeks*. Information about learning outcomes, programme learning outcomes and assessment methods stored in table *learningOutcomes*, *LOAssessmentMethod* and *assessmentMethod*. Information about student learning time stored in table *groupLearningTime* and *learningTime*. All these tables have relationships with table *tbUser*, table *tbDept*, table *fac*, table *tbLevel*, and table *subjectCourse*. The detail schema of the Question Bank System (QBS) can be seen on Fig. 2.

#### B. Semantic Data Mapping Result Using D2RQ

From four different results produced by D2RQ, this research focuses on the semantic data mapping language to adjust and integrate with other semantic data mapping files and after that will be used in the ontology language to conduct semantic data integration process. The result of the data mapping file is in turtle file format (.ttl) that contains all information about data sources and schema of the data inside the data source. The D2RQ Mapping Language is a declarative language for describing the relationship between a relational database scheme and RDFS vocabularies or OWL ontologies. A D2RQ mapping is itself an RDF document written in Turtle syntax. The mapping is expressed using terms in the D2RQ namespace. Namespace is a domain that serves to guarantee the uniqueness of identifiers, written like uniform resource locator (URL). The namespace that is used in this research is “<http://www.semanticmapping.edu/exercise/qbs#>”. This namespace also is used in other data mapping file and in the ontology language as a unique name from this process. The terms in this namespace are formally defined in the D2RQ RDF schema (Turtle version, RDF/XML version). Furthermore, the example of data mapping language using D2RQ is represented as a turtle file format named *qbs.ttl*. The snippet contents of the *qbs.ttl* can be seen on Fig. 3.

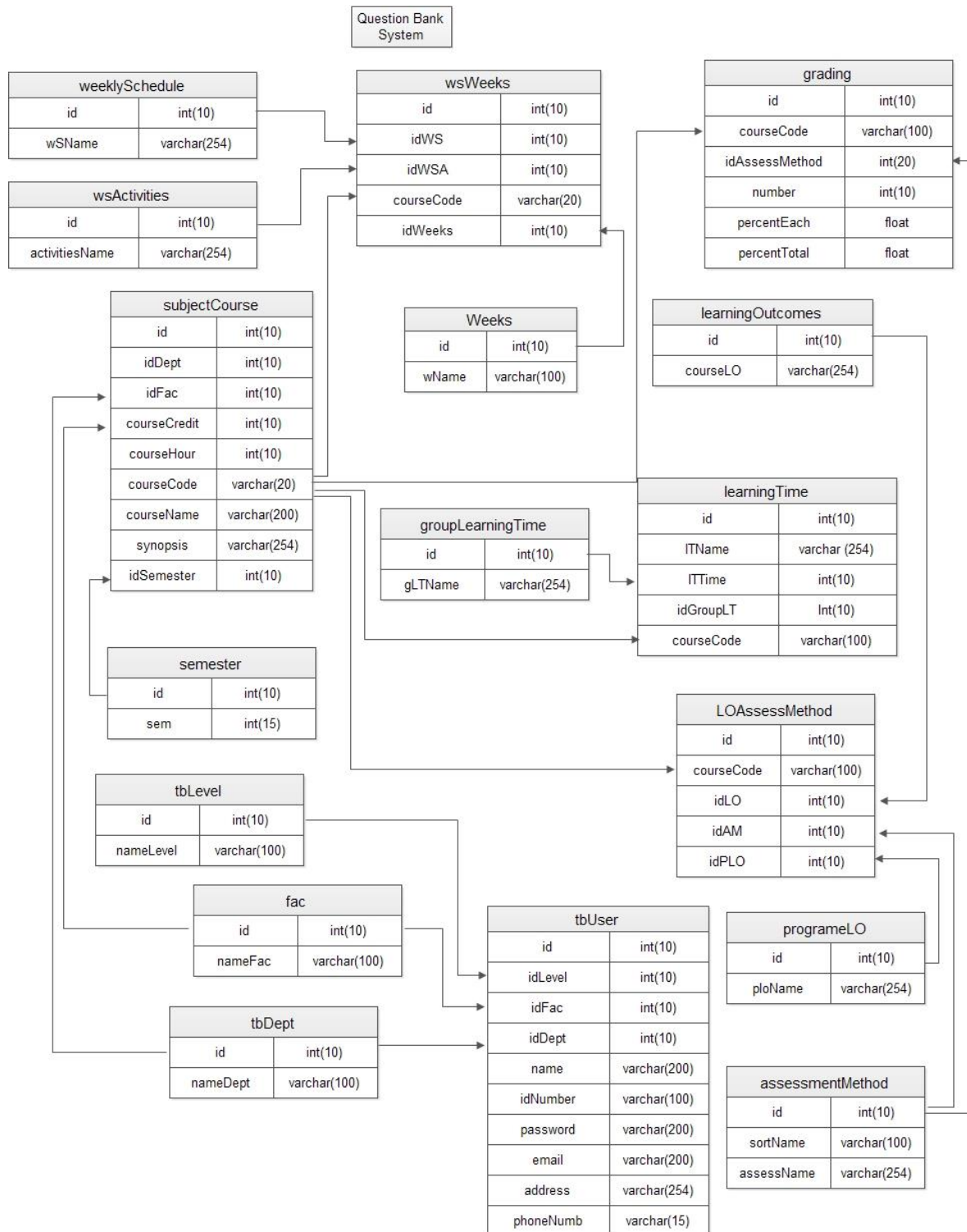


Fig. 2. Question Bank System Data Schema

```

@prefix map: <#> .
@prefix db: <> .
@prefix vocab: <vocab/> .
@prefix rdf: <http://www.w3.org/1999/02/22-rdf-syntax-ns#> .
@prefix rdfs: <http://www.w3.org/2000/01/rdf-schema#> .
@prefix xsd: <http://www.w3.org/2001/XMLSchema#> .
@prefix d2rq: <http://www.wiwi.fu-berlin.de/suhl/bizer/D2RQ/0.1#> .
@prefix jdbc: <http://d2rq.org/terms/jdbc/> .
@prefix learning: <http://www.semanticmapping.edu/exercise/qbs#> .

map:database a d2rq:Database;
    d2rq:jdbcDriver "com.mysql.jdbc.Driver";
    d2rq:jdbcDSN "jdbc:oracle:thin:@localhost:1521:qbs";
    d2rq:username "qbs";
    d2rq:password "";
    jdbc:autoReconnect "true";
    jdbc:zeroDateTimeBehavior "convertToNull";
    .

# Table assessmentmethod
map:assessmentmethod a d2rq:ClassMap;
    d2rq:dataStorage map:database;
    d2rq:uriPattern "assessmentmethod/@@assessmentmethod.id@@";
    d2rq:class vocab:assessmentmethod;
    d2rq:classDefinitionLabel "assessmentmethod";
    .

# Table grading
map:grading a d2rq:ClassMap;
    d2rq:dataStorage map:database;
    d2rq:uriPattern "grading/@@grading.id@@";
    d2rq:class vocab:grading;
    d2rq:classDefinitionLabel "grading";
    .

map:grading__label a d2rq:PropertyBridge;
    d2rq:belongsToClassMap map:grading;
    d2rq:property rdfs:label;
    d2rq:pattern "grading #@@grading.id@@";
    .

# Table tbdept
map:tbdept a d2rq:ClassMap;
    d2rq:dataStorage map:database;
    d2rq:uriPattern "tbdept/@@tbdept.id@@";
    d2rq:class vocab:tbdept;
    d2rq:classDefinitionLabel "tbdept";
    .

.....

```

Fig. 3. Snippet Contents of qbs.ttl

There is standard format to written or produce RDF document file the main thing is about document prefix that contains details information about the RDF file. There are two important prefix that need identify on every D2RQ mapping file. The first one is d2rq prefix that contain specific address of the D2RQ file. The second one is about name mapping file complete with the specific unique address of the mapping file. This is very important to be described in the mapping file because this information will also be used in the other mapping files and in the ontology language. In the next part of the mapping file is about detail of all data schema from database system. The detail schema contains information about database system name, database name, database driver and



DSN, database username, database password and any others specification. The body of the data mapping file contains all information about table name and rows name. The detail about table name and field/column name will customize and adjust with others data mapping file (manual mapping process) to create semantic data mapping between some data schema. In this process every column name which has semantic aspect problem will be adjusted to another suitable column name in the different table, database, database system, and place system [3].

#### IV. Conclusions

The problem of the semantic aspect in the heterogeneity phenomenon is the current big issue on the data. In two different applications, it may occur the same data with different data representation inside the data source. This situation needs to be solving with the semantic data mapping process using specific tool or technology. In this research has been successful to compare and analyze fourteen semantic data mapping technologies using five criteria's. The result of the analysis is the recommended semantic data mapping technology which is superior to other technologies. Furthermore, the recommended semantic data mapping technology is implemented using real data in certain application. The result of this implementation is the semantic data mapping file that can be used to map, share and integrate with other semantic data mapping file or can also integrate with the ontology language. In the future research will continue this work to map and integrate with other semantic data mapping file to be used in the ontology language.

#### Acknowledgment

This work is supported by King Abdulaziz University. The authors would like to thank to the Deanship of Scientific Research Management (DSR) King Abdulaziz University for the support and incentive extended in making this study a success.

#### References

- [1] M. A. Kabir, J. Han, A. Colman, N. R. Aljohani, M. Basher, Z. Xing, *et al.*, "Engineering Socially-Aware Systems and Applications," in *2016 21st International Conference on Engineering of Complex Computer Systems (ICECCS)*, 2016, pp. 81-90.
- [2] M. Rani, R. Nayak, and O. P. Vyas, "An ontology-based adaptive personalized e-learning system, assisted by software agents on cloud storage," *Knowledge-Based Systems*, vol. 90, pp. 33-48, 12// 2015.
- [3] A. Yuniata, N. Yusof, A. Bramantoro, H. Haviluddin, M. S. Othman, and N. Dengen, "Data mapping process to handle semantic data problem on student grading system," *International Journal of Advances in Intelligent Informatics*, vol. 2, p. 157-166, 2016.
- [4] N. Arch-int and S. Arch-int, "Semantic Ontology Mapping for Interoperability of Learning Resource Systems using a rule-based reasoning approach," *Expert Systems with Applications*, vol. 40, pp. 7428-7443, 2013.
- [5] J. Bian, H. Zhang, and X. Peng, "The Research and Implementation of Heterogeneous Data Integration under Ontology Mapping Mechanism," presented at the International Conference on Web Information Systems and Mining, Verlag Berlin Heidelberg, 2011.
- [6] R. Shyamala, R. Sunitha, and G. Aghila, "Towards Learner Model Sharing Among Heterogeneous E-Learning Environments," *International Journal of Engineering Science and Technology (IJEST)*, vol. 3, pp. 2034-2040, 2011.
- [7] A. Yuniata, M. S. Othman, N. Yusof, L. M. Yusuf, Juwairiah, and N. S. Selamat, "Solving the complexity of heterogeneity data on learning environment using ontology," *Telkomnika (Telecommunication Computing Electronics and Control)*, vol. 13, pp. 341-348, 2015.
- [8] W. Kim and J. Seo, "Classifying schematic and data heterogeneity in multi database systems," *IEEE Computer*, vol. 24, pp. 12-18, 1991.
- [9] V. Kashyap and A. Sheth, "Semantic heterogeneity in global information systems: The role of metadata, context and ontologies.," in *Cooperative information systems*, M. P. Papazoglou and G. Schlageter, Eds., ed San Diego: Academic Press, 1997, pp. 139-178.
- [10] H. Dong-mei, D. Yan-ling, Z. Ming-hua, and Z. Chi, "Application of ontology-based automatic ETL in marine data integration," in *Electrical & Electronics Engineering (EEESYM), 2012 IEEE Symposium on*, 2012, pp. 11-13.

- [11] "Semantic integration," in *Information Sharing on the Semantic Web*, ed Berlin, Heidelberg: Springer Berlin Heidelberg, 2005, pp. 3-23.
- [12] H. Stuckenschmidt and F. v. Harmelen, "Semantic integration," in *Information Sharing on the Semantic Web*, H. Stuckenschmidt and F. van Harmelen, Eds., ed Berlin, Heidelberg: Springer Berlin Heidelberg, 2005, pp. 3-23.
- [13] P. Sandborn, J. Terpenney, R. Rai, R. Nelson, L. Zheng, and C. Schafer, "Knowledge representation and design for managing product obsolescence," in *Proceedings of NSF civil, mechanical and manufacturing innovation grantees conference*, Atlanta, Georgia, 2011.
- [14] L. Zheng and J. Terpenney, "A hybrid ontology approach for integration of obsolescence information," *Computers & Industrial Engineering*, vol. 65, pp. 485–499, 2013.
- [15] F. J. Ekaputra, E. Serrai, D. Winkler, and S. Biffl, "A semantic framework for data integration and communication in project consortia," in *Data and Software Engineering (ICODSE), 2014 International Conference on*, 2014, pp. 1-6.
- [16] A. Yuniarta, N. Yusof, M. S. Othman, A. Aziz, N. Dengen, M. Ugiarto, *et al.*, "Semantic data mapping on E-learning usage index tool to handle heterogeneity of data representation," *Jurnal Teknologi (Sciences and Engineering)*, vol. 69, pp. 1-6, 2014.
- [17] A. Yuniarta, N. Yusof, M. S. Othman, A. Aziz, and N. Dengen, "Analysis and Identification of Data Heterogeneity on Learning Environment Using Ontology Knowledge," in *International Conference on Electrical Engineering, Computer Science and Informatics (EECSI 2014)*, Yogyakarta, Indonesia, 2014, pp. 154-160.
- [18] A. Yuniarta, N. Yusof, H. Jayadianti, M. Othman, and S. Suhaimi, "Ontology Development to Handle Semantic Relationship between Moodle E-learning and Question Bank System," in *Recent Advances on Soft Computing and Data Mining*. vol. 287, T. Herawan, R. Ghazali, and M. M. Deris, Eds., ed: Springer International Publishing, 2014, pp. 691-701.
- [19] T. Bittner, M. Donnelly, and S. Winter, "Ontology and Semantic Interoperability," in *Large-scale 3D Data Integration: Challenges and Opportunities*, D. Prosperi and S. Zlatanova, Eds., ed: CRCpress (Taylor & Francis), 2005, pp. 139-160.
- [20] J. M. Alcaraz Calero, J. M. Marín Pérez, J. Bernal Bernabé, F. J. Garcia Clemente, G. Martínez Pérez, and A. F. Gómez Skarmeta, "Detection of semantic conflicts in ontology and rule-based information systems," *Data & Knowledge Engineering*, vol. 69, pp. 1117-1137, 11// 2010.
- [21] S. Schulz and C. Martínez-Costa, "How Ontologies Can Improve Semantic Interoperability in Health Care," in *Process Support and Knowledge Representation in Health Care*. vol. 8268, D. Riaño, R. Lenz, S. Miksch, M. Peleg, M. Reichert, and A. ten Teije, Eds., ed: Springer International Publishing, 2013, pp. 1-10.
- [22] S. Sonsilphong and N. Arch-int, "Semantic Interoperability for Data Integration Framework using Semantic Web Services and Rule-based Inference: A case study in healthcare domain," *Journal of Convergence Information Technology(JCIT)*, vol. 8, 2013.
- [23] R. Cyganiak, C. Bizer, J. Garbers, O. Maresch, and C. Becker. (2012, 2). *The D2RQ Mapping Language (v0.8 – 2012-03-12 ed.)*.
- [24] C. Bizer and R. Cyganiak. (2007, June). *D2RQ — Lessons Learned*. Available: <http://www.w3.org/2007/03/RdfRDB/papers/d2rq-positionpaper>
- [25] C. Bizer and A. Seaborne, "D2RQ - Treating Non-RDF Databases as Virtual RDF Graphs," presented at the ISWC2004 (posters), 2004.
- [26] R. Kienast and C. Baumgartner, "Semantic Data Integration on Biomedical Data Using Semantic Web Technologies," in *Bioinformatics - Trends and Methodologies*, D. M. A. Mahdavi, Ed., ed: InTech, 2011.
- [27] M. Melik-Merkumians, A. Zoitl, and T. Moser, "Ontology-based fault diagnosis for industrial control applications," in *Emerging Technologies and Factory Automation (ETFA), 2010 IEEE Conference on*, 2010, pp. 1-4.
- [28] O. Kovalenko and T. Moser, "Using explicit and machine-understandable engineering knowledge for defect detection in automation systems engineering," in *International Doctoral Symposium on Software Engineering and Advanced Applications (IDoSEAA)*, Oulu, Finland, 2011, pp. 1-5.
- [29] V. Jirkovsky, P. Kadera, M. Obitko, and P. Vrba, "Diagnostics of distributed intelligent control systems: Reasoning using ontologies and hidden markov models," in *the 14th IFAC Symposium on Information Control Problems in Manufacturing (INCOM)*, 2012, pp. 1315-1320.

- [30] J. Barrasa Rodríguez, O. Corcho, and A. Gómez-Pérez, "R2O, an extensible and semantically based database-to-ontology mapping language," in *Proceedings of the Second Workshop on Semantic Web and Databases, SWDB 2004*, vol. 3372, ed. Berlín, Alemania: Springer-Verlag, 2004, pp. 1069-1070.
- [31] M. Svihla and I. Jelinek, "Two layer mapping from database to RDF," in *Proceedings of the Sixth International Scientific Conference Electronic Computers and Informatics, ECI 2004*, 2004, pp. 270-275.
- [32] Z. Wu, H. Chen, C. Changhuang, G. Zheng, and J. Xu, "DartGrid: Semantic-Based Database Grid," in *Computational Science - ICCS 2004: 4th International Conference, Kraków, Poland, June 6-9, 2004, Proceedings, Part I*, M. Bubak, G. D. van Albada, P. M. A. Sloot, and J. Dongarra, Eds., ed. Berlin, Heidelberg: Springer Berlin Heidelberg, 2004, pp. 59-66.
- [33] H. Chen and Z. Wu, "DartGrid III: A Semantic Grid Toolkit for Data Integration," in *2005 First International Conference on Semantics, Knowledge and Grid*, 2005, pp. 12-12.
- [34] E. Prud'hommeaux. (2005, May). *Sparql: SPARQL support in MySQL*. Available: <http://www.w3.org/2005/05/22-SPARQL-MySQL/XTech>
- [35] W. Zhaohui, D. Shuiguang, W. Jian, C. Huajun, T. Shuming, and G. Haijun, "DartGrid II: a semantic grid platform for ITS," *IEEE Intelligent Systems*, vol. 20, pp. 12-15, 2005.
- [36] J. B. Rodriguez and A. Gómez-Pérez, "Upgrading relational legacy data to the semantic web," presented at the Proceedings of the 15th international conference on World Wide Web, Edinburgh, Scotland, 2006.
- [37] N. Cullot, R. Ghawi, and K. Yétongnon, "DB2OWL: A Tool for Automatic Database-to-Ontology Mapping," in *15th Italian Symposium on Advanced Database Systems*, Torre Canne, 2007, pp. 491-494.
- [38] M. Šeleng, M. Laclavík, Z. Balogh, and L. Hluchý, "RDB2Onto: Approach for creating semantic metadata from relational database data," 2007.
- [39] M. Svihla and I. Jelinek, "Benchmarking RDF Production Tools," in *Database and Expert Systems Applications: 18th International Conference, DEXA 2007, Regensburg, Germany, September 3-7, 2007. Proceedings*, R. Wagner, N. Revell, and G. Pernul, Eds., ed. Berlin, Heidelberg: Springer Berlin Heidelberg, 2007, pp. 700-709.
- [40] K. N. Vavliakis, A. L. Symeonidis, G. T. Karagiannis, and P. A. Mitkas, "Eikonomia-An Integrated Semantically Aware Tool for Description and Retrieval of Byzantine Art Information," in *19th IEEE International Conference on Tools with Artificial Intelligence (ICTAI 2007)*, 2007, pp. 279-282.
- [41] M. Fisher, M. Dean, and G. Joiner, "Use of OWL and SWRL for semantic relational database translation," presented at the OWLED 2008: OWL Experiences and Directions, Gaithersburg, MD, USA, 2008.
- [42] S. Auer, S. Dietzold, J. Lehmann, S. Hellmann, and D. Aumüller, "Triplify: light-weight linked data publication from relational databases," presented at the Proceedings of the 18th international conference on World wide web, Madrid, Spain, 2009.
- [43] C. Bizer, J. Lehmann, G. Kobilarov, #246, r. Auer, C. Becker, *et al.*, "DBpedia - A crystallization point for the Web of Data," *Web Semant.*, vol. 7, pp. 154-165, 2009.
- [44] O. Erling and I. Mikhailov, "RDF Support in the Virtuoso DBMS," in *Networked Knowledge - Networked Media: Integrating Knowledge Management, New Media Technologies and Semantic Systems*, T. Pellegrini, S. Auer, K. Tochtermann, and S. Schaffert, Eds., ed. Berlin, Heidelberg: Springer Berlin Heidelberg, 2009, pp. 7-24.
- [45] S. S. Sahoo, W. Halb, S. Hellmann, K. Idehen, T. T. Jr, S. Auer, *et al.*, "A Survey of Current Approaches for Mapping of Relational Databases to RDF," ed, 2009.
- [46] J. F. Sequeda, R. Depena, and D. P. Miranker, "Ultrawrap: Using SQL Views for RDB2RDF," in *8th International Semantic Web Conference (ISWC2009)*, Washington DC, USA, 2009.
- [47] D. M. T. Al-Sudairy and T. G. K. Vasista, "Semantic Data Integration Approaches for E-Governance," *International Journal of Web & Semantic Technology*, 2011.
- [48] K. N. Vavliakis, A. L. Symeonidis, G. T. Karagiannis, and P. A. Mitkas, "An integrated framework for enhancing the semantic transformation, editing and querying of relational databases," *Expert Syst. Appl.*, vol. 38, pp. 3844-3856, 2011.
- [49] K. N. Vavliakis, T. K. Grollios, and P. A. Mitkas, "RDOTe - Publishing Relational Databases into the Semantic Web," *Journal of Systems and Software*, vol. 86, pp. 89-99, 2013.
- [50] D. Haase, U. Germing, J. Schanz, M. Pfeilstöcker, T. Nösslinger, B. Hildebrandt, *et al.*, "New insights into the prognostic impact of the karyotype in MDS and correlation with subtypes: evidence from a core dataset of 2124 patients," *Blood*, vol. 110, pp. 4385-4395, 2007.

- [51] J. F. Sequeda and D. P. Miranker, "Ultrawrap: SPARQL execution on relational data," *Web Semantics: Science, Services and Agents on the World Wide Web*, vol. 22, pp. 19-39, 2013/10/01/ 2013.
- [52] S. Bowers, J. S. Madin, and M. P. Schildhauer, "Owlifier: Creating OWL-DL ontologies from simple spreadsheet-based knowledge descriptions," *Ecological Informatics*, vol. 5, pp. 19-25, 2010.
- [53] K. N. Vavliakis, T. K. Grollios, and P. A. Mitkas. RDOE - Transforming Relational Databases into Semantic Web Data, 2010.