
PLACE PROCESS IN SPACE WITH TERRITORIAL AMBIVALENCE CASE STUDY: SURONATAN, YOGYAKARTA

Tika Ainunnisa Fitria

Architecture Program
Faculty of Science and Technology
Universitas Aisyiyah Yogyakarta
tikafitria@unisayogya.ac.id

Indah Pujiyanti

Architecture Program
Faculty of Science and Technology
Universitas Aisyiyah Yogyakarta
indahpujiyanti@unisayogya.ac.id

History of the manuscript:
Manuscript submitted July 29, 2025
Final manuscript accepted January 17, 2026

ABSTRACT

The existence of the Village is closely related to the morphology, history, and philosophy of the city of Yogyakarta and is related to the socio-spatial life and its people. Kampung Suronatan experiences intersections of activities that have an impact on the formation of spontaneous spaces along its transitional space. Physical changes in the transitional space and the phenomenon of utilization and territorial claims. This research question refers to how the place process occurs in Kampung Suronatan, as a space with territorial ambivalence. This research was conducted qualitatively, focusing on spatiality and its behavior as a space former. Data were obtained through snapshot observations and short questions which were then analyzed using a behavioral approach. ArcGIS was used to map the location of spontaneous spaces formed in the transitional space. Place process in the transitional space in Suronatan is influenced by spatial tolerance and spatial conceptions influenced by local norms related to spatial territoriality. Place process is defined as a process of spatialization that is spontaneous and temporal. Enriching the theory of place process that has not been linked to territoriality.

KEYWORDS: place process, territorial ambivalence, transitional space village

Keberadaan Kampung sangat melekat dengan dari morfologi, sejarah, dan filosofi kota Yogyakarta dan berkaitan dengan kehidupan sosial-spasial dan masyarakatnya. Kampung Suronatan mengalami irisan aktivitas yang berdampak pada pembentukan ruang-ruang spontan di sepanjang ruang transisinya. Perubahan fisik ruang transisi dan fenomena pemanfaatan dan klaim teritorialnya. Pertanyaan penelitian ini merujuk pada bagaimana terjadinya place process pada Kampung Suronatan, sebagai ruang dengan ambivalensi teritorial. Penelitian ini dilakukan secara kualitatif yang berfokus pada spasial dan perilakunya sebagai pembentuk ruang. Data didapatkan melalui observasi snapshot dan pertanyaan singkat yang kemudian dianalisis dengan pendekatan perilaku. ArcGIS digunakan untuk memetakan letak ruang-ruang spontan yang terbentuk di ruang transisi. Place process pada ruang transisi di Suronatan dipengaruhi oleh toleransi spasial dan konsepsi ruang yang dipengaruhi oleh norma-norma lokal yang berkaitan dengan teritorialitas ruang. Place process didefinisikan sebagai proses meruang yang bersifat spontan dan temporal. Memperkaya teori place process yang belum mengaitkan dengan teritorialitas.

KATA KUNCI: proses penempatan, ketidakpastian teritorial, ruang transisi, desa

INTRODUCTION

The important role of urban villages as part of urban identity cannot be ignored. The urban village, called *kampung*, cannot be separated from the morphology, history, and philosophy of the city of Yogyakarta as the main structure of the city and functions as an accelerator of urban growth (Ikaputra, 2008). Similarly, it can be understood that preserving kampung sustains the city of Yogyakarta and the people simultaneously. However, nowadays, kampungs often experience changes in function, from entirely residential to economic areas, impacting spatial transformation and daily community life. These phenomena are often found in the kampung's transitional space, particularly in the alleys and the

house terrace. The community unconsciously formed the spaces in their neighborhood. In other words, the behavior influences how space is formed. Therefore, exploring the place process relating to people's behavior is necessary. It is important to understand the complex behavior of humans (Sargolini, 2013). Moreover, the micro-spatial level is appropriate for investigating the relationship between people and specific environments (Wood & Giles-Corti, 2008). It shows that place process can be framed by the transitional space. Transitional space has an important role in accommodating life in the kampung and social interactions between residents.

This condition aligns with Kampung Suronatan which has changed function as a traditional residential area. The overlapping of spatial functions occurs due

to the existence of Madrasah Muallimat with several dormitories, which attract various activities along the Suronatan transition space, thus triggering the formation of temporal spaces. For example, the public transitional space, such as alleys used by residents and paddlers to sell in the short term (shown in Figure 1). On the other hand, the dominant use of alleys that function as public spaces indicate the existence of territorial behavior that occurs and is interesting to study.

Based on a preliminary survey, it was found that this behavior is closely related to flexible transitional space use. Moreover, this sharing of territory becomes common because the locals capture these student activities as economic opportunities. This can be understood by analyzing spatial configuration and community life (Hutama, 2018). Thus, this study's problem statement relates to the place process by observing transitional space and its components, and the territorial behavior of locals, peddlers and students; emphasizing empirical and theoretical contexts.

This scope is relevant due to the lack of territorial previous research that discussed on physical and social impacts (Hwang, Stewart, & Ko, 2012), spatial patterns (Ramadhani, Faqih, & Hayati, 2018), spatial modification (Rahim & Hashim, 2018). The relationship between place processes and territoriality has not been discussed. Furthermore, this study addresses the research gap by focusing on a neighborhood with territorial ambivalence, particularly in its transitional space, such as an alley. Kampung's alley is interesting to discuss due to its unique uses. The alley functions as a circulation and social space (Prayitno, 2013), a public place where people interact socially (Hutama, 2018), a place that creates a sense of togetherness and social interaction (Pendola & Gen, 2008). In addition, it has an organic pattern that builds a shared space (Rahmi, Wibisono, & Setiawan, 2001a) and closely related to community behavior (Fitria et al, 2022). By discussing these local phenomena, this research aims to enrich the theory of architectural behavior.

The research question is how the conception of place process in an urban neighborhood, a kampung which have territorial ambivalence phenomena. This is conceived through a case study, Kampung Suronatan's transitional space. A case study relates to human experiences, situations, and meanings as comprehensively and accurately as possible (Seamon and Gill, 2015). Moreover, phenomenological research explores the formation of a place (Allen & Crookes, 2009) and finds people's daily experiences (Larsen, 2020).



Figure 1. Public Transitional Space Use in Suronatan
(Source: Author's Document, 2024)

Transitional Space and Neighborhood

Transitional space creates social interaction between neighbors in an environment (Pendola & Gen, 2008). This space has flexibility and accessibility to preserve the kampung social system (Rahmi, Wibisono, & Setiawan, 2001b), social existence and daily life (Hickman, 2013). It shows a relationship between space, community (Osti, 2015), and interaction (Madanipour, 2003). In the same context, transitional space, such as an alley, becomes an important place for community activities (Li, Ratti, & Seiferling, 2017) intended to function as pedestrian meeting spaces (Utami, Indradjati, & Poerbo, 2018). It sums that transitional space can be associated with community social activities, especially in a kampung. Furthermore, Middleton (2018) stated that pedestrian activities and community ties drive social experiences. This experience is found through their gestures, such as sitting, eating, greeting and chatting (Fitria, Said, & Rasidi, 2022). It shows that transitional space becomes a dynamic spatial, resulting from the relationship between natural and physical characteristics, social expectations and cultural norms. Hence, it becomes a place-based approach that relates to people's perception towards their neighborhood—psychological relationship. However, the relationship between place and community can be seen differently (Hargreaves, 2004). In sum, transitional space and social activities shows the community's belonging to their neighborhood. This phenomenon can be described as incidental and daily behavior.

Territoriality and Territorial Ambivalence

Territoriality is one of the elements of architectural behavior (Ratna & Ikaputra, 2019). It is how people build a control (Raharjo, 2010) and the sense of ownership (Pretty, Chipuer, & Bramston, 2003). For example, in a kampung, they marked a territory by sign and fence (Fitria, et al., 2022). It shows a relational feeling in a spatial context (Obst, Smith, & Zinkiewicz, 2002), an experience of each individual (Mannarini,

Tartaglia, Fedi, & Greganti, 2006), and an individual perception (Puddifoot, 2003).

Furthermore, territorial ambivalence is a difference behaviour in sharing transitional spaces; it is a territorial transaction. It arises from each individual's interpretation of the importance of transitional spaces (Fitria et al, 2022). It concludes that a kampung with territorial ambivalence experiences a territorial struggle. Nevertheless, each individual understands their territory and coexist. The territorial becomes flexible and leeway and marked in various forms.

METHODS

This study was conducted qualitatively with two leading research parameters aiming to look deeper into spatial behavior as a space shaper. Data were collected through spatial observations of the environment and the behavior of its users. It is important to understand the experience of space and time. Spatial-related data were obtained through the spatial arrangement of the transition space with observations on the territoriality of space and the location of its elements, in this case, sellers and stalls. Meanwhile, the behavior of residents was collected through quick observations (snapshots) and short questions. Snapshot observations can effectively capture short-duration activities (Can and Heath, 2015). Furthermore, the data were analyzed using a behavioral mapping approach. Spatial settings show how a space accommodates certain activities that affect people's activity patterns (Hargreaves, 2004). ArcGIS was used to obtain data related to the location of spontaneous spaces in the transition space. This process efficiently understands spatial behavior (Korpilo, Virtanen, Saukkonen, & Lehvävirta, 2018). Furthermore, the layout of the space is observed by depicting the depth of the space to see its territoriality. Spatial images function to understand space visually and spatially (McCunn & Gifford, 2018) and the existence and importance of an object in space (Bukit, Hanan, & Wibowo, 2012). Thus, this method helps find the place process in a space with territorial ambivalence.

RESULTS AND DISCUSSION

Peddlers and *Warung* as Elements of Transitional Space

Suronatan has undergone a transformation, from a settlement to a kampung that is dominated by madrasah and dormitory buildings impacting on the growth of local businesses, such as food stalls, laundries, grocery stores, and peddlers. This informal sector impacts on the use of the alley that also

functions for interaction between neighbors. It becomes information center that coordinates daily activities (Kochan, 2015). The economic spaces along the alley are formed temporally, such as satay sellers and grilled rice sellers (Figure 2). Moreover, some houses transforms into local shop – *warung*, such as grocery stores and food stalls.



Figure 2. Private Transitional Space Use in Suronatan
(Source: Author's Document, 2024)

The alley's use experienced temporary changes in the morning, afternoon, and evening, along with the economic changes. In the morning, the alley was dominated by peddlers selling breakfast. There were crowding points caused by interaction between peddlers and buyers, especially Mualimat students. This spontaneous space lasts about one hour, particularly from 06.00 am to 07.00 am. However, this crowding gradually diminished in line with students entering the class. The alley temporarily became an access and a local's economic area.

The spontaneous space was reformed during students' breaks from 11.30 am to 01.00 pm. During the day, non-resident food peddlers dominated the street. These spontaneous spaces were marked by pushcarts and motorbikes that occupy the same place daily. They mapped their territorial space in the alley spontaneously and temporary. It shows that the territories, in Suronatan's alley, are temporary and

change quickly; nevertheless, its spatial order is permanent due to the same peddler's location every day (as shown in Figure 3).

In the afternoon, the distribution of interaction spaces in the alley also followed the location of the peddlers and stalls. These temporal spaces were formed during students' break time, 4.30 pm, and disappeared after the break time, 5.30 pm, or before the Maghrib call. It impacted the spatial density decreased in the alley.

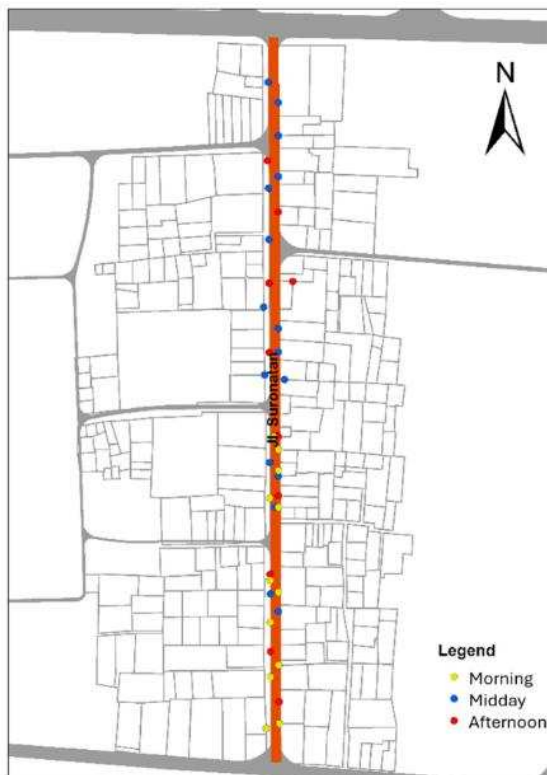


Figure 3. Distribution of Spontaneous Space in The Transitional Space of Suronatan
(Source: Author's Document, 2024)

Transitional Space and Territorial Ambivalence

Suronatan consists of a linear 3-meter-wide street, which is optimally used for accessibility only around 2.5 meters, and the rest for peddlers selling. Suronatan is dominated by houses without terraces and fences, which create spontaneous interaction places. Meanwhile, the low-height fences on some houses only function as markers of space ownership. This finding shows that the connectivity and openness of transitional spaces, street and alley, spontaneously formed interaction spaces, causing low space privatization. Moreover, it impacted the high connection between houses and transitional spaces, particularly the houses functioning as stalls; connectivity and openness of space impact the formation of social space in Suronatan (as shown in Figure 4).

The openness and connectivity of the transitional space in Suronatan provide flexible access forming spontaneous spaces simultaneously. For example, peddlers used the terrace of residents' houses, or residents transformed the front of their houses into a selling area. It showed that territorial behavior manifests in how residents form spontaneous spaces along the transitional space in their neighborhood. Moreover, these spaces are greatly influenced by the distribution of the peddlers and stalls. Simultaneously, these components become the nodes of interaction among residents in Suronatan. In sum, transitional space functions not only as access and connectivity but also as an economic space that impacts the formation of spaces or place processes.



Figure 4. Width of Transition Space in Suronatan
(Source: Author's Document, 2025)

The Student's Movement in Forming of Spontaneous Space

Students moved from the dormitory to the madrasah and vice versa. This movement occurred in the morning from 6.00 a.m., with the busiest activity from 6.30 a.m. to 6.50 a.m., when students left for the madrasah from their dormitories. They stopped at the peddler or stall to buy food. Temporal spaces were formed during this movement (shown in Figure 5). Furthermore, the same pattern occurred when students return to the dormitory around 5.00 p.m. It is concluded that the interaction spaces are formed along with the people's movement in the transitional space. In other words, daily movement in a neighborhood is an important variable of interaction space formation; a place process. In addition, the movement patterns affect the order of spontaneous space formation in the transition space. It is also influenced by the location of the transition space elements, in this case, the madrasah, dormitory, stall, and peddler.

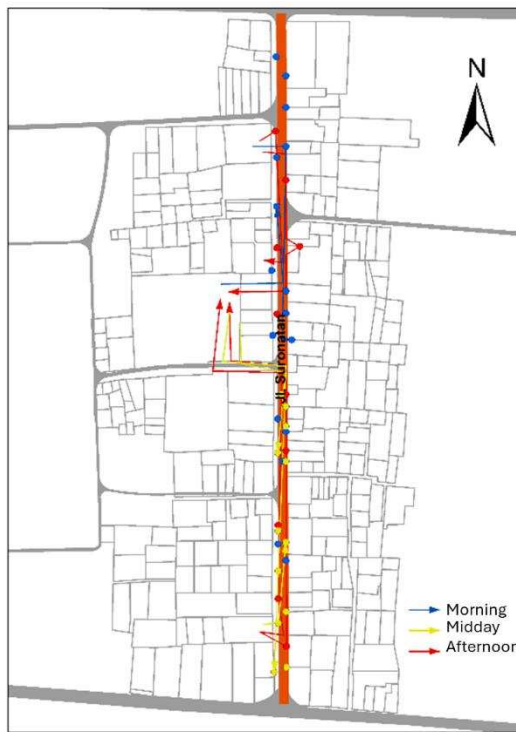


Figure 5. The Student’s Movement
(Source: Author’s Document, 2024)



Figure 6. Spot of User’s Perception
(Source: Author’s Document, 2024)

User’s Perception towards Transitional Space

Residents’ experiences of transitional space are shown by their perceptions. Pedestrians reveal the characteristics of a transitional space (Fitria et al., 2022). Influences space’s formation. Meanwhile, the physical and dimension of transitional space are not the influencing aspects.

Furthermore, residents’ experiences of transitional space can be seen from how they conceptualize it as a spontaneous space. However, diverse concepts can emerge in the same transitional space. In addition, residents are possessive towards their territory by placing objects (Huang et al., 2019). These emotional experiences consist of spatial, emotional, repetitive activities, and elements playing a role in the process of spontaneous spaces formation in Suronatan. Through emotional maps, spatiality can be seen as an influencing factor in the formation of spontaneous space in Suronatan, relating to distance (three respondents) and the same direction (five respondents). However, the elements (ten) dominantly influence space formation, namely food peddlers and stalls, followed by repetitive activities (nine respondents) that arise from each respondent’s routine use of transitional space.

This perception-related data was collected at several points during user activity, asking, “*What is your impression of this place?*”. Data collection took place in the morning, midday, afternoon, and on weekends (as shown in Figure 6).

For example, in the morning, users’ perception of the transition space is predominantly related to their daily activities. Meanwhile, in the afternoon, they perceive the transition space as a place to be with friends and in the same direction as friends. This occurs when students transition from the dormitory to the madrasah or school (as shown in Table 1).

Table 1. User’s Impression and Perception Category

User’s impression	Perception Category (total)
Near (3), Same Direction with friends (5)	Spatial (8)
Safe (1), with friends (5)	Emotion (6)
Daily/ Routine (9)	Repetitive Activity (9)
Food peddlers (6), stalls (4)	Identity of transitional space (10)

It is concluded that user perception of space is influenced by spatial experience, emotional, repetitive activities, and the spatial identity attached to the local elements that exist in the transition space, such as food peddlers and stalls. In addition, several factors also influenced the formation of spontaneous space in Suronatan. Firstly, spatial tolerance. It was found that Suronatan’s residents accepted various activities in their transitional space. This tolerance was influenced by socio-economic factors that influenced the residents’ attitudes in Suronatan time by time. They tolerated part of their house’s territorial. For example, they temporarily lent their terrace to traders or shared the alley with peddlers and students. It concludes that

the space formation in Suronatan occurs due to a spatial tolerance in its transitional space. In addition, there is a positive relationship between space formation and socio-economic factors. Next, a conception of transitional space. Residents perceptualized the leeway of transitional space's use and territory. Moreover, everyone could transform the transitional space and make physical interventions based on their needs. They considered transitional space as a flexible space and allowed them to conceptualize spontaneously. In sum, the residents' experience, including their perceptions and conceptions towards transitional space and its elements, influence the formation of spontaneous space and their attachment to these spaces. The more flexible the territory of transitional space is, the more spontaneous spaces are formed. Finally, the territorial ambivalence in a neighborhood's transitional space becomes blurred.

It concludes that the formation of space is influenced by local norms that affect the territoriality of the transitional space, a territorial transaction. Territorial boundaries are lost. Hence, a transitional space cannot only be conceptualized as a spatial structure of a neighborhood but also as an emotional experience of spontaneous formation of spatial units within it. Thus, territorial ambivalence does not hinder the formation of spontaneous spaces; a place process in Suronatan. This spontaneous space is influenced by movement, perception, and distribution of spontaneous spaces (as shown in Figure 7).

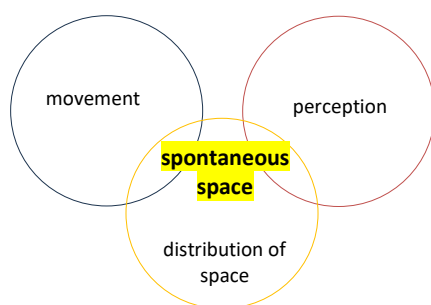


Figure 7. Spot of User's Perception
(Source: Author's Document, 2025)

CONCLUSION

Place process is understood as "An understanding of place as process provides helpful ways for thinking through connections between how places work and how they might be fabricated and reinvigorated....the way to explore place generatively....a positive emotional bonding comes automatically into place, including a largely pre-predicative, unmeditated ethos of caring for this place" (Seamon, 2014). Through a case study of Suronatan as a neighborhood with territorial ambivalence, the place process can be defined as a spatial process that occurs through

spontaneous space. This process is formed from the habits of residents' interactions in their daily lives and territorial transactions. Further, the place process results from how people conceptualize transitional spaces. This process also relates to people's behavior in modifying their transitional spaces. This study has enriched the theory of place process which has not been linked to territorial discussions.

This study reveals opportunities to expand the context of the place process while still specifying the scope of transitional space territorial. Thus, further research could complement this study by explaining the place process deeply and correlating it to other social and territorial phenomena. Furthermore, practically, this research focuses on the importance of understanding transitional space in sustaining a liveable kampung. It must be implemented in a planning policy, especially in kampungs undergoing spatial transformation.

REFERENCES

- Allen, C., & Crookes, L. (2009). Fables of the reconstruction: A phenomenology of "place shaping" in the North of England. *Town Planning Review*, 80(4), 455. <https://doi.org/10.3828/tpr.2009.7>
- Bukit, E. S., Hanan, H., & Wibowo, A. S. (2012). Aplikasi Metode N . J . Habraken pada Studi Transformasi. *Ikatan Peneliti Lingkungan Binaan Indonesia*, 1(1), 51–62.
- Can, I., & Heath, T. (2015). In-between spaces and social interaction: a morphological analysis of Izmir using space syntax. *Journal of Housing and the Built Environment*, 31(1), 31–49. <https://doi.org/10.1007/s10901-015-9442-9>
- Fitria, T. A., Rasidi, M. H., Said, I., & Firdaus, R. (2022). Local Elements Defining Transitional Spaces as a Territorial Strategy at an Urban Village in the City of Yogyakarta, Indonesia. *International Journal of Sustainable Development and Planning*, 17(6), 1821–1829.
- Fitria, T. A., Said, I., & Rasidi, M. H. (2022). The Social Movement : Redefining Meaning of Transitional Space in Kampung Urban Neighbourhood. *Advances in Social Science, Education and Humanities Research*, 671(International Webinar on Digital Architecture 2021), 206–209. Yogyakarta: Atlantis Press.
- Hargreaves, A. (2004). Building communities of place: Habitual movement around significant places. *Journal of Housing and the Built Environment*, 19(1), 49–65. <https://doi.org/10.1023/B:JOHO.0000017706.38123.43>
- Hickman, P. (2013). "Third places" and social interaction in deprived neighbourhoods in Great

- Britain. *Journal of Housing and the Built Environment*, 28(2), 221–236. <https://doi.org/10.1007/s10901-012-9306-5>
- Hutama. (2018). The Hidden Structure of Organic Informal-like Settlements in Jogjakarta City : An Investigation of Socio-Spatial Relationship in an Urban Kampung. *IOP Conference Series: Earth and Environmental Science*, (May). Research Gate. <https://doi.org/10.1088/1755-1315/158/1/012003>
- Hwang, D., Stewart, W. P., & Ko, D. wan. (2012). Community behavior and sustainable rural tourism development. *Journal of Travel Research*, 51(3), 328–341. <https://doi.org/10.1177/0047287511410350>
- Ikaputra. (2008). Core House: A Structural Expandability For Living Study Case of Yogyakarta Post Earthquake 2006. *DIMENSI: Journal of Architecture and Built Environment*, 36(1), 10–19. <https://doi.org/10.9744/dimensi.36.1.pp>
- Kochan, D. (2015). Placing the Urban Village: A Spatial Perspective on the Development Process of Urban Villages in Contemporary China. *International Journal of Urban and Regional Research*, 39(5), 927–947. <https://doi.org/10.1111/1468-2427.12287>
- Korpilo, S., Virtanen, T., Saukkonen, T., & Lehvävirta, S. (2018). More than A to B: Understanding and managing visitor spatial behaviour in urban forests using public participation GIS. *Journal of Environmental Management*, 207, 124–133. <https://doi.org/10.1016/j.jenvman.2017.11.020>
- Larsen, T. (2020). Life Takes Place: Phenomenology, Lifeworlds and Place Making. *The AAG Review of Books*, 8(1), 1–4. <https://doi.org/10.1080/2325548x.2020.1689070>
- Li, X., Ratti, C., & Seiferling, I. (2017). Mapping Urban Landscapes Along Streets Using Google Street View. In M. P. Peterson (Ed.), *Advances in Cartography and GIScience* (Vol. 1, pp. 91–107). Springer International Publishing. <https://doi.org/10.1007/978-3-319-57336-6>
- Madanipour, A. (2003). Public and private spaces of the city. In *Public and Private Spaces of the City*. London: Routledge. <https://doi.org/10.4324/9780203402856>
- Mannarini, T., Tartaglia, S., Fedi, A., & Greganti, K. (2006). Image of Neighborhood, Self-Image and Sense of Community. *Journal of Environmental Psychology*, 26(3), 202–214. <https://doi.org/10.1016/j.jenvp.2006.07.008>
- McCunn, L. J., & Gifford, R. (2018). Spatial navigation and place imageability in sense of place. *Cities*, 74, 208–218. <https://doi.org/10.1016/j.cities.2017.12.006>
- Middleton, J. (2018). The socialities of everyday urban walking and the ‘right to the city.’ *Urban Studies*, 55(2), 296–315. <https://doi.org/10.1177/0042098016649325>
- Obst, P., Smith, S. G., & Zinkiewicz, L. (2002). An Exploration of Sense of Community, Part 3: Dimensions and Predictors of Psychological Sense of Community in Geographical Communities. *Journal of Community Psychology*, 30(1), 119–133.
- Osti, G. (2015). Socio-spatial Relations: An Attempt to Move Space Near Society. *Poliarchie/Polyarchies.*, 4(April). Retrieved from <https://www.researchgate.net/publication/282442154>
- Pendola, R., & Gen, S. (2008). Does “main street” promote sense of community?: A comparison of San Francisco neighborhoods. *Environment and Behavior*, 40(4), 545–574. <https://doi.org/10.1177/0013916507301399>
- Prayitno, B. (2013). An Analysis on Spatial Permeability and Fluid Dynamics of Wind and Thermal in Tropical Riverside Residential Areas of Banjarmasin City, Indonesia. *Manusia Dan Lingkungan*, 20(2), 199–212.
- Pretty, G. H., Chipuer, H. M., & Bramston, P. (2003). Sense of place amongst adolescents and adults in two rural Australian towns: The discriminating features of place attachment, sense of community and place dependence in relation to place identity. *Journal of Environmental Psychology*, 23(3), 273–287. [https://doi.org/10.1016/S0272-4944\(02\)00079-8](https://doi.org/10.1016/S0272-4944(02)00079-8)
- Puddifoot, J. E. (2003). Exploring “Personal” and “Shared” Sense of Community Identity in Durham City, England. *Journal of Community Psychology*, 31(1), 87–106. <https://doi.org/10.1002/jcop.10039>
- Rahim, Z., & Hashim, A. H. (2018). Behavioural Adaptation of Malay Families and Housing Modification of Terrace Houses in Malaysia. *Asian Journal of Environment-Behaviour Studies*, 3(6), 49. <https://doi.org/10.21834/ajebs.v3i6.235>
- Rahmi, D. H., Wibisono, B. H., & Setiawan, B. (2001a). Rukun and Gotong Royong: Managing Public Places in an Indonesian Kampung. In Pu Miao (Ed.), *Public Places in Asia Pacific Cities* (pp. 119–134). Kluwer Academic. https://doi.org/10.1007/978-94-017-2815-7_6
- Rahmi, D. H., Wibisono, B. H., & Setiawan, B. (2001b). *Rukun and Gotong Royong: Managing Public Places in an Indonesian Kampung*. 119–134. https://doi.org/10.1007/978-94-017-2815-7_6
- Ramadhani, A. N., Faqih, M., & Hayati, A. (2018). Inhabitant ' S Sense Of Place In The Context Of

- Tourism Kampung. *Architecture & Environment*, 17(2), 151–168.
- Ratna, N. D., & Ikaputra. (2019). Teritorialitas Dalam Tinjauan Ilmu Arsitektur. *INERSIA*, 15(1), 12–22. <https://doi.org/10.21831/inersia.v15i1.24860>
- Sargolini, M. (2013). *Urban Landscapes: Environmental Networks and Quality of Life*. Milan: Springer. <https://doi.org/10.1002/9781118384466.ch25>
- Seamon, D., & Gill, H. K. (2015). Qualitative approaches to environment-behavior research: Understanding Environmental and Place Experiences, Meanings, and Actions. *Research Methods for Environmental Psychology*, (April 2016), 115–135. <https://doi.org/10.1002/9781119162124.ch7>
- Utami, W. N., Indradjati, P. N., & Poerbo, H. W. (2018). Kebutuhan Ruang Transisi di Kawasan CBD Kota Bandung Berdasarkan Preferensi dan Persepsi Pejalan Kaki. *Tataloka*, 20(4), 344. <https://doi.org/10.14710/tataloka.20.4.344-361>
- Wood, L. & Giles-Corti, B. (2008). Is there a place for social capital in the psychology of health and place?. *Journal of Environmental Psychology*, 28(2), 154-163. <https://doi.org/10.1016/j.jenvp.2007.11.003>