



<https://e-journal.trisakti.ac.id/index.php/livas/index>

FACTOR FOR CORRECTING THE RAINFALL OF CHIRPS SATELLITE DATA AGAINST OBSERVATION DATA ON THE CILIWUNG WATERSHED (CASE STUDY OF KEMAYORAN METEOROLOGI STATION)

Endah Kurniyaningrum^{1*}, Mutiara Difa Faluty², Hegi Daniel Mulya³, Sih Andajani⁴, Dina Paramitha Anggraeni Hidayat⁵, Wahyu Sejati⁶, Hira Sattar⁷

^{1,2,3,4,5,6} Department of Civil Engineering, Faculty of Civil Engineering and Planning, Universitas Trisakti, Jakarta, 11440, Indonesia.

⁷ Tokyo Institute of Technology, Tokyo, Japan

*Corresponding author: kurniyaningrum@trisakti.ac.id

ABSTRACT

The hydrological and environmental cycles in a river area strongly affect rainfall intensity and seasonal patterns. To accurately assess water resource capacity, precise rainfall data from each observation station is crucial. However, unevenly distributed rain gauges often challenge researchers, as insufficient data can hinder their analysis. In these situations, satellite images can provide valuable additional information.

Aims: The objective of this study was to analyze the accuracy of CHIRPS satellite rainfall data from observation stations in the Ciliwung watershed, especially in the DKI Jakarta Province area, over the last 30 years (1993–2022).

Methodology and results: Statistical analysis such as multiple linear regression with the stepwise method is used to analyze CHIRPS rainfall against observed rainfall data according to the location of the rain station. The validation results in this study show that the average results of the two observation stations have a value of $R^2 = 0.91$ and $NSE = 0.9068$.

Conclusion, significance and impact study: CHIRPS data can be categorized as very good if used as an alternative to limited observational rainfall data, which can then be used in analyzing water availability in the Ciliwung watershed (Jakarta).

MANUSCRIPT HISTORY

Received
May 15, 2024
Revised
May 29, 2024
Accepted
June 11, 2024

KEYWORDS

- Accuracy,
- CHIRPS,
- Ciliwung Watershed,
- Rainfall,
- Jakarta

1. INTRODUCTION

Climate significantly affects many sectors and lives. It's important to study because climate conditions vary greatly depending on location, latitude, longitude, and the earth's uneven surface [1]. Rainfall, a key climate component, plays a crucial role. Changes in rainfall intensity

over 10–30 years can impact water availability and human activities [2]. The world's climate is experiencing changes; these changes result in increasing temperatures and sea levels. Future climate change may cause more intensive hydrological cycle processes [3], including increased variations in rainfall [4] and changes in evaporation rates [5]. Increasing global temperatures will increase the rate of evapotranspiration and speed up the water cycle [6]. As a result, an uneven distribution of moisture in the atmosphere will occur, causing heavy rainfall in one region and extreme drought in other regions [7]. Changes in rainfall patterns in Indonesia will lead to a delay in the start of the rainy season and a tendency towards an earlier start at the at the end of the rainy season. This means that the rainy season occurs in a shorter time but has a higher rainfall intensity [8].

Rainfall is an important climate element for human activities. Rainfall has characteristics that vary according to space and time, so the availability of adequate data is important for understanding the characteristics of rainfall in a region [9]. However, the problem is that in some areas, tools for measuring rainfall data are sometimes not available, so to overcome the lack of availability of rain data in recent years, a number of studies have been carried out on the use of rain data based on remote sensing or satellite technology [10]. Many studies have been conducted regarding the use of satellite rainfall data, including [11], [12], using GPM to measure extreme rainfall events in China and North China [13], using GPM, and PERSIANN to estimate flood discharge in the Progo watershed; and evaluated satellite rainfall predictions using GPM and PERSIANN [14].

Rainfall variability is spatially based on the location or place where the rain falls. In mountainous areas, topography, and elevation is a factor that influences bulk rain and should be considered for prediction and mapping. For the most part, areas have been found that increase rainfall with elevation has a linear relationship. Apart from the elevation factor, other additional factors that Influencing rainfall are also necessary considered. This is due to the nature of rainfall in mountainous orographic areas, where the rainfall pattern is complex and incomprehensible with good results [15]. Mapping the spatial variability of rainfall can be carried out using the method of spatial interpolation. The resolution of topography has the significant effect on the flood simulation results [16].

Rainfall is defined as the amount of water that falls to the ground over a specified period of time. It is typically measured in units of height (mm) above a horizontal surface, assuming no evaporation, runoff, or infiltration. The type of vegetation cover can influence rainfall conditions, and precipitation can result in water loss [17] and affect flow velocity [18], [19]. The research has

been conducted to validate CHIRPS data. The findings indicate that the accuracy of CHIRPS rainfall data in West Kalimantan is classified as very good [20]. However, the correlation between CHIRPS data and AWS data in South Lampung is in the weak category [21]. Additionally, the CHIRPS data correlation is relatively low due to topographic factors, the distance of rain stations to nearby mountains or oceans, and local wind circulation [22].

This research project aims to analyse historical changes in rainfall in the Ciliwung catchment area, with a particular focus on the capital city of Jakarta. To achieve this, the research will validate CHIRPS satellite data against observational data based on previous research, namely changes in rainfall in the Ciliwung catchment area per year from 1993 to 2042, namely 1.29% [23]. The objective is to gain an in-depth understanding of changes in rainfall in the Ciliwung watershed (Jakarta) and to assess the accuracy of satellite data in comparison to observational data.

2. RESEARCH METHODOLOGY

2.1 Case Study: Ciliwung Watershed in Jakarta

The study area is Ciliwung Watershed in Jakarta, Indonesia. The location of the Ciliwung Watershed in Jakarta is presented in Figure 1. Jakarta is a densely populated area and has experienced significant land cover development. The Ciliwung River is a river that flows in the DKI Jakarta area, Bogor Regency, Bogor City, Depok City, Bekasi, and surrounding areas. Ciliwung is recorded as having a main stream length of 120 kilometers, while its catchment area (river flow) is 387 km². The Ciliwung River Watershed has very strategic value because it crosses two provinces, namely West Java and DKI Jakarta, but due to the rapid development activities in these two provinces, it has caused significant land use changes and management. The research was conducted in the Ciliwung River Watershed, especially the DKI Jakarta area, with an area of 13,995 ha. This research covers the administrative areas of North Jakarta, East Jakarta, West Jakarta, Central Jakarta, and South Jakarta in the Ciliwung watershed area.



Fig 1. Ciliwung Watershed in Jakarta

2.2 Rainfall datasets

The observed rainfall data presented here has been obtained from a rainfall observation station, namely the Kemayoran Meteorological Station. The coordinates of the Kemayoran station are 106° 50' 24" East Longitude and 6° 9' 20" South Latitude. This data includes observational rainfall data from the Indonesian Meteorological, Climatological, and Geophysical Bureau (BMKG) in addition to baseline rainfall data from the Climate Hazards Group InfraRed Precipitation with Station (CHIRPS) project (<https://www.chc.ucsb.edu/data/chirps>) spanning the past three decades, from 1993 to 2022.

Table 1. Datasets

Data	Source
Rainfall baseline (CHIRPS)	https://www.chc.ucsb.edu/data/chirps
Climate Projections (MICROC5)	https://chelsa-climate.org/future/
Rainfall observation	BMKG and BBWS Ciliwung Cisadane

2.3 Climate Hazard Group Infrared Precipitation with Stations (CHIRPS)

CHIRPS (Climate Hazard Group Infrared Precipitation with Stations Data) is rainfall data that comes from combining observational data with satellite data, which has a spatial resolution of around 0.05° (per pixel) or around 5km x 5km, to estimate sustainable changes in rainfall in a region. as well as for analysis of rainfall trends. CHIRPS data availability began in 1981 and continues today with daily, monthly, and decade rainfall categories. There are various factors that influence the accuracy of satellite rainfall data, such as environmental conditions, local

climate, season, and topography. CHIRPS data requires a further analysis process to validate the data against observed rainfall data.

2.4 Bias Correction

The statistical method employed in bias correction as a re-analysis of observational rainfall data is multiple linear regression analysis with a stepwise method. The initial step in correcting this method is to calculate the estimated rainfall according to the coordinates of the observation rainfall station, as illustrated by the following equation:

$$Y(ik) = a + b_1X_1(ik) + b_2X_2(ik) + b_3X_3(ik) + b_4X_4(ik) \quad (2-1)$$

where:

$Y(ik)$ = Rainfall observation day -i, grid -k

a = constant day -i, grid -k

b_i = regression coefficient day -i

$X_1(ik)$ = Rainfall day -i, grid -k

$X_2(ik)$ = Grid longitude -k

$X_3(ik)$ = Grid latitude -k

The next step is to calculate the error value between the observed rainfall and the estimated rainfall.

$$E(ik) = Y(ik) - Y'(ik) \quad (2-2)$$

Then interpolate the error value according to the size and number of grids. Next, calculate the estimated rainfall and error for all grids using equation (2-2). And as the final step, calculate the corrected rainfall for the entire grid being analyzed by adding up the estimated rainfall with the error value. Note that the corrected rain value, which is negative, is changed to zero.

The static performance test on CHIRPS Re-Analysis rainfall uses two static parameters, namely:

- **Coefficient of Determination (R^2)**

R^2 shows the level of linear relationship between observation data and model data. The R^2 value ranges from 0 to 1. If R^2 is 1, the result shows perfect agreement between the model data and the observed data.

$$R^2 = \left[\frac{\sum_{i=1}^N [(Y_i^{obs} - \bar{Y}^{obs})(Y_i^{sim} - \bar{Y}^{sim})]}{\sqrt{\sum_{i=1}^N [(Y_i^{obs} - \bar{Y}^{obs})^2 \sum_{i=1}^N [(Y_i^{sim} - \bar{Y}^{sim})^2]}} \right]^2 \quad (2-3)$$

Where \bar{Y}^{obs} is the average of observation data and \bar{Y}^{sim} is the average of simulation data.

- **NSE (Nash-Sutcliffe Efficiency)**

NSE (Nash-Sutcliffe Efficiency) represents how well the simulated value compares to the observed value. The NSE value ranges from ∞ to 1, and the closer to 1, the better the model performance is said to be. NSE can be calculated using the equation (Gupta et al. 2009):

$$NSE = \left[1 - \left(\frac{\sum_{i=1}^n (Y_i^{obs} - Y_i^{sim})^2}{\sum_{i=1}^n (Y_i^{obs} - \bar{Y}^{obs})^2} \right) \right] \quad (2-4)$$

Table 2. Parameter Assessment

Parameter	NSE	R ²
Very Good	0.75 ≤ NSE ≤ 1	0.75 ≤ R ² ≤ 1
Good	0.65 ≤ NSE ≤ 0.75	0.65 ≤ R ² ≤ 0.75
Satisfactory	0.5 ≤ NSE ≤ 0.65	0.5 ≤ R ² ≤ 0.65
Unsatisfactory	NSE ≤ 0.5	R ² ≤ 0.5

3. RESULTS AND DISCUSSION

Constraints in the availability of rainfall data in a region often become obstacles in research, mainly due to the uneven distribution of rain posts and a lack of complete observation data. In an effort to overcome this problem, this research utilizes global data sources, such as CHIRPS (Climate Hazard Group InfraRed Precipitation with Station Data).

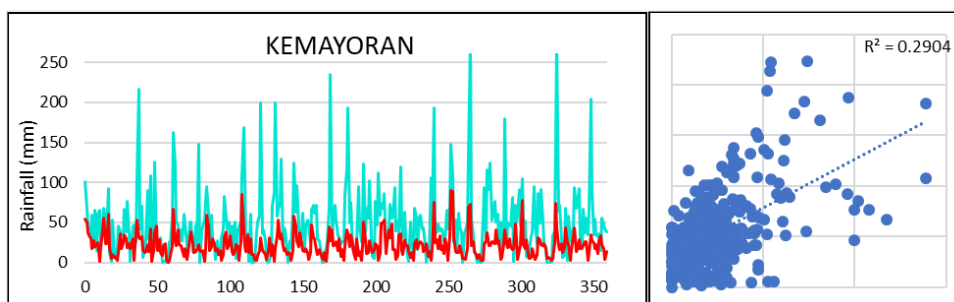


Fig 2. Maximum Rainfall Pattern and Fitting Curve between Observed Rainfall and CHIRPS

The CHIRPS rainfall data used in this research first carried out a performance test by comparing data obtained at rain posts in the Ciliwung watershed area of DKI Jakarta, namely the BMKG Meteorological Station. Figure 2 shows the CHIRPS monthly maximum rainfall pattern and maximum observed rainfall, as well as the fitting curves at rain station. Visually, the CHIRPS data

**Rainfall Correction Factor of Chirps Satellite Data Against Observation Data of Ciliwing Watershed
(Case Study of Kemayoran Meteorological Station)**

Kurniyaningrum, Faluty, Mulya, Andayani, Hidayat, Sejati, Satar
p-ISSN 2580-7552; e-ISSN 2548-7515, Volume 9, Number 2, pp 149 – 158, 2024

rainfall pattern has rainfall values that are unable to follow observed rainfall.

Visually, CHIRPS rainfall values are unable to follow observed rainfall. This is supported by the static test results in Table 3, showing that the performance of CHIRPS data is very low, where R² and NSE are in the not good enough category, or it can be said that CHIRPS data underestimates observational data. So further analysis of CHIRPS rainfall values is needed by conducting trial and error.

Table 3. CHIRPS Rainfall Static Test Results

	R ²	NSE
Kemayoran	0.2904	-0.1794

Based on the R² and NSE statistical tests, it shows that the performance of CHIRPS data compared to observation data is very low, where the R² value is below 0.5 and the NSE value is below 0.5. This shows that CHIRPS data underestimates observation data at selected rain stations. So further analysis of CHIRPS rainfall values is needed by conducting trial and error. After trial and error correction of bias 5 (five) times, the CHIRPS data was tested for performance at the observation station. The results show that the 5th trial has a good value. The recap results in Table 4 show that the performance test has improved data quality compared to before analysis, namely that the R² value shows a value above 0.5, and likewise, with the NSE test, the corrected CHIRPS data for stations is close to 1, which indicates a more accurate model.

Table 4. CHIRPS Rainfall Static Test Results (Trial)

	R ²	NSE
Kemayoran	0.9279	0.9111

Figure 3 shows visually that the CHIRPS data after analysis shows good ability to follow patterns and approach the observed data values at both rain stations. So it has great potential to be used to predict changes in rainfall in the future.

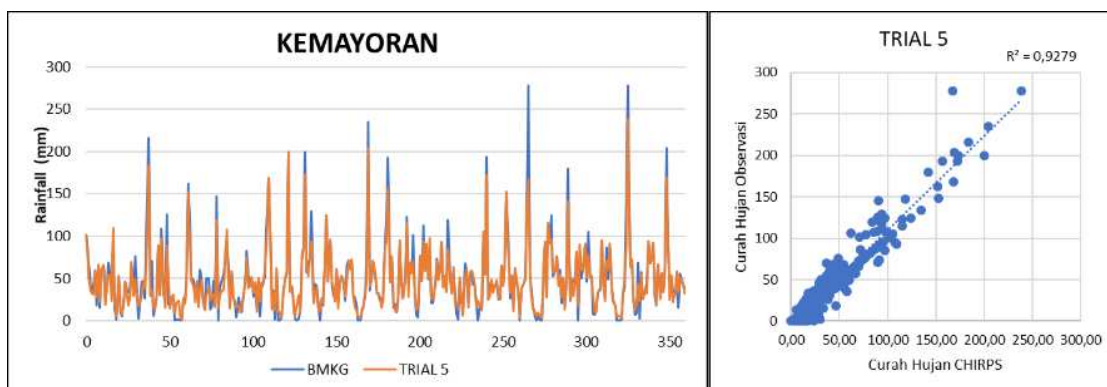


Fig 3. Maximum Rainfall Pattern and Fitting Curve between Observed Rainfall and CHIRPS.

Then the CHIRPS data was compared by making a daily maximum rainfall curve from 1993 to 2022, both before and after correction. This aims to assess how well MIROC5 accurately estimates actual rainfall and provides an important basis for further use of this data in future climate change-related research. Analysis of baseline rainfall characteristics in the Ciliwing watershed, especially the Jakarta area, provides a significant picture of rainfall variability at monitoring stations.

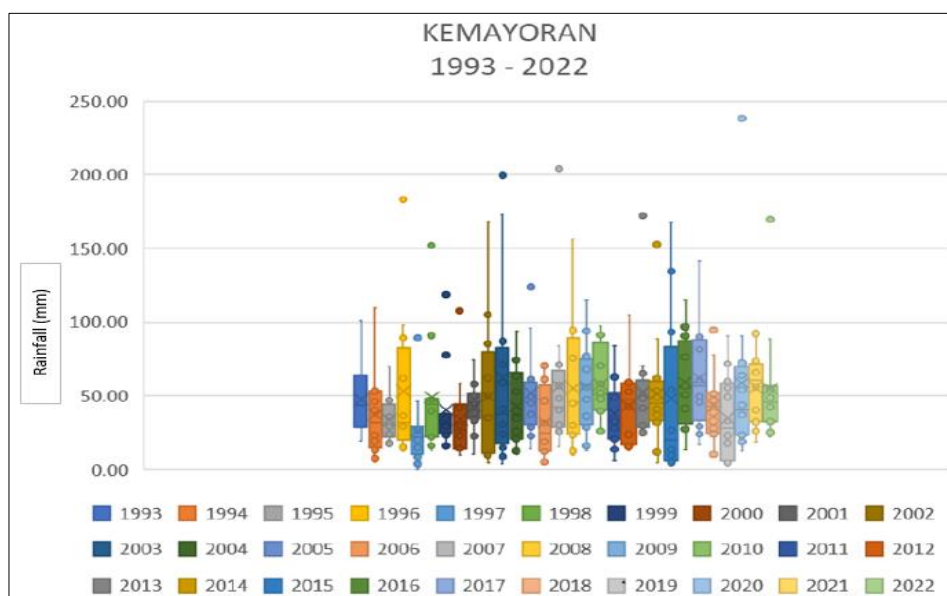


Fig 4. Box plot of maximum rainfall for the period 1993–2022.

Figure 4 displays a box plot of baseline rainfall at Kemayoran Station in the Ciliwing watershed, providing additional insight into understanding the climate characteristics of the Ciliwing watershed. The maximum average annual rainfall for 30 years (1993–2022) is 1021.87 mm/year; the minimum average is 227.47 mm/year. while the average annual rainfall at Kemayoran Station is 487.32 mm/year.

4. CONCLUSION

CHIRPS data estimates for daily rainfall for the period 1993–2022 at the BMKG meteorological station tend to have very good CHIRPS data accuracy values (average percent bias = 9.27%, NSE = 0.9111). This shows that CHIRPS data is able to estimate events of rain in the Ciliwing watershed area, especially in the Jakarta area. CHIRPS estimates are higher in light rainfall (< 30 mm) and lower in heavy to very heavy rainfall. Utilization of CHIRPS data can be done by first increasing the accuracy of CHIRPS data by applying a correction factor to two groups of daily

rainfall categories, namely the light category and the medium to very heavy category in the research area. This is supported by the land cover conditions in the research area. CHIRPS data can be categorized as very good if used as an alternative to limited observational rainfall data, which can then be used in analyzing water availability in the Ciliwung watershed (Jakarta).

5. ACKNOWLEDGEMENT

The authors convey appreciation to thank to Balai Besar Wilayah Sungai Ciliwung-Cisadane for providing all the necessary data for this study and encouragement to conduct such studies for the benefit of science and society.

6. REFERENCES

- [1] Ariffin. (2019). Metode Klasifikasi Iklim di Indonesia. UB Press.
- [2] Kementerian PPN/Bappenas. Rencana Aksi Nasional Adaptasi Perubahan Iklim Kajian Basis Ilmiah Proyeksi Iklim Atmosferik
- [3] K. E. Trenberth, "Conceptual framework for changes of extremes of the hydrological cycle with climate change," *Clim. Change*, 1999, doi: 10.1023/A:1005488920935.
- [4] P. Pathak, A. Kalra, S. Ahmad, dan M. Bernardez, "Wavelet-Aided Analysis to Estimate Seasonal Variability and Dominant Periodicities in Temperature, Precipitation, and Streamflow in the Midwestern United States," *Water Resour. Manag.*, 2016, doi: 10.1007/s11269-016-1445-0.
- [5] P. R. Hosang, J. Tatu, dan J. E. X. Rogi, "Analisis Dampak Perubahan Iklim Terhadap Produksi Beras Provinsi Sulawesi Utara Tahun 2013 –2030," *EUGENIA*, 2012, doi: 10.35791/eug.18.3.2012.4101.
- [6] H. Tian et al., "Model estimates of net primary productivity, evapotranspiration, and water use efficiency in the terrestrial ecosystems of the southern United States during 1895-2007," *For. Ecol. Manage.*, 2010, doi: 10.1016/j.foreco.2009.10.009.
- [7] K. Hayhoe et al., "Past and future changes in climate and hydrological indicators in the US Northeast," *Clim. Dyn.*, 2007, doi: 10.1007/s00382-006-0187-8.
- [8] Diposaptono, B. Erosi Pantai (Coastal Erosion), *Prosiding Pelatihan Pengelolaan Wilayah Pesisir Terpadu*, (online) <http://repository.ipb.ac.id/handle/123456789/24571>, 2009.
- [9] Misnawati, M., Boer, R., June, T., & Faqih, A. Perbandingan metodologi koreksi bias data curah hujan chirps, *Limnotek: perairan darat tropis di Indonesia*, 2018, 25(1).
- [10] Mutiara, J., Yudianto, D., & Fitriana, F. Studi Perbandingan Curah Hujan Hasil Pengukuran Pos Hujan Dan Satelit Untuk Wilayah Bandung Comparison Study Of Rainfall Measured At Groundstation And Sattelite For Bandung Region, *Jurnal Teknik Sumber Daya Air*, 2017, pp.137-144.
- [11] Fang, J., Yang, W., Luan, Y., Du, J., Lin, A., & Zhao, L., Evaluation of the TRMM 3B42 and GPM IMERG products for extreme precipitation analysis over China, *Atmospheric research*, 2019, 223, pp. 24-38.
- [12] Sun, W., Sun, Y., Li, X., Wang, T., Wang, Y., Qiu, Q., & Deng, Z. Evaluation and correction of GPM IMERG precipitation products over the capital circle in Northeast China at multiple spatiotemporal scales, *Advances in Meteorology*, 2018.
- [13] Ginting, Jody M. Analisis Hujan Satelit PERSIANN dan GPM untuk Perkiraan Debit Banjir DAS Progo, 2019, Tesis, Universitas Gadjah Mada Yogyakarta.

- [14] Pratiwi, Destiana Wahyu, Joko Sujono and Adam Pamudji Rahardjo. "Evaluasi Data Hujan Satelit Untuk Prediksi Data Hujan Pengamatan Menggunakan Cross Correlation", Seminar Nasional Sains Dan Teknologi, 2017, (11), pp. 1–11.
- [15] Moreno, J. S. F., et al. Influence of Topography on Rainfall Variability in Santiago Island, Cape Verde. *International Journal of Climatology*, 2013, 34(4), pp. 1087-1097.
- [16] Kurniyaningrum, E., Limantara, L.M., Suhartanto, E., Sisingsih, D. Sensitivity of Flow Depth Inundation Based on the Micro-Scale Topography in Krukut River, Jakarta, Indonesia. *International Journal of Civil Engineering and Technology (IJECT)*, 2019, 10(1), pp. 697-706.
- [17] Kurniyaningrum, E., Kurniawan, M.A. Climate Change Effect on Water Balance For Water Critically in Upper Bogowonto Watershed, Indonesia. *IOP Conf. Series: Earth and Environmental Science*, 2022, pp. 1-10.
- [18] Kurniyaningrum, E., Kadri, T., Daniel, H.M., Condition Of Riparian Buffer Zone In Krukut River, Indonesia. In *Proceedings of The 2nd Complexity In Applied Science and Engineering International Conference*, 2018, Phuket, Thailand, 12-14 October 2018.
- [19] Kadri, T., Kurniyaningrum, E., Limantara, L.M. Hydrology Characteristics in Krukut River Riparian Buffer Zone. *Journal of Southwest Jiaotong University*, 2021, 56(6), pp. 277-284.
- [20] Suryanto, J., Amprim, Anisum. Validasi Curah Hujan Harian CHIRPS Precipitation Satellite Product di Provinsi Kalimantan Barat. *Jurnal Ilmiah Rekayasa Pertanian dan Biosistem*, 2023, 11(1), pp. 73-88.
- [21] Pratama, A., Agiel, H. M., & Oktaviana, A. A. Evaluasi satellite precipitation product (GSMaP, CHIRPS, dan IMERG) di Kabupaten Lampung Selatan. *Journal of Science and Applicative Technology*, 2022, 6(1), 32– 40.
- [22] Liu, C. Y., Aryastana, P., Liu, G. R., & Huang, W. R. Assessment of satellite precipitation product estimates over Bali Island. *Atmospheric Research*, 2020, 244, pp. 1-14
- [23] Widayanto, A.M., Kurniyaningrum, E. Pengaruh Perubahan Iklim Terhadap Hujan Rencana Pada DAS Ciliwung, DKI Jakarta. *Syntax Literate: Jurnal Ilmiah Indonesia*, 2023, 8(8), pp. 5624-5636