

RESTORING CULTURAL HERITAGE: INNER CITIES OF LAHORE

Zunair Ahmed¹, Ammar Yasir²

University of New South Wales, Sydney, Australia

University of Engineering and Technology, Lahore, Pakistan

Article Information

**WINTER
JOURNAL**

**IMWI STUDENT RESEARCH
JOURNAL**

Volume 5, Nomor 2

August 2024

Page.: 85-96

**Institut Manajemen Wiyata
Indonesia,**

Jl. Gudang No. 7-9,

Kota Sukabumi,

Jawa Barat.

Keywords:

Heritage, Renewal, Cities, Lahore,
historical

Corresponding Author:

Planner.zunair@gmail.com,

Planner.ammar@gmail.com

Abstract

Restoring cultural heritage in the inner cities of Lahore is essential for preserving the rich history and traditions of this vibrant city. Incorporating traditional elements into modern urban development can enhance the city's unique identity and charm. Integrating historical architecture with contemporary design can create a harmonious blend of old and new, breathing new life into Lahore's inner cities. This fusion of past and present pays homage to the city's heritage and attracts investment and economic opportunities. Active community participation is crucial in the restoration process, as it fosters a sense of ownership and responsibility among residents. Involving local artists, artisans, and historians in conservation projects can preserve authentic cultural practices and skills at risk of being lost. Empowering communities to take pride in their cultural heritage creates a strong sense of belonging and strengthens social cohesion.

INTRODUCTION

The Heritage is the story of the people and considers being an Integral part of global development. It is like a thread that connects people religiously, culturally, spiritually, similar to each other, and to a mutual traditions, history and monuments etc. So, conservation of heritage of country is essential because without heritage, people lose a unique chapter of their history and a crucial part of our rich human story. Conservation of Lok Virsa in general and historical buildings in particular is necessary because it represents the beauty of nation and past history. An activity undertaken to conserve the heritage or heritage importance is considered as conservation and it includes preservation, protection, regeneration, identification, redevelopment, rehabilitation, revitalization, adaptation, restoration, structural consolidation, maintenance for the resolution of transmission of heritage importance.

Inner Lahore is a city that is surrounded by large walls to fortify it and other settlements from potential aggressors. In antique to present times, they were used to encircle settlements. Generally, it is referred as town city. There are many walled cities around the world including Egypt, Iran, Israel, Iraq, China, Lebanon, India, Pakistan and many more. Almost every ancient city in Pakistan had a protective wall. In order to refortify the cities many walls were destroyed by the British. Few cities which were fortified are: Hyderabad, Lahore, Multan, Peshawar etc. Pakistan's Lahore is a jewel in Pakistan's heritage. The technological, cultural, and population changes in Lahore are not compatible with the planning, form, and ancient structures of the Inner Lahore.

There are many broad based sectors in which problems regarding heritage and its conservation and preservation in various cities towns or walled cities are found in western countries in general but in Asian and developing countries in particular. The population in the inner Lahore is already very dense, and average of about 1,100 persons per hectare, compared with about 160 persons per hectare in the rest of the metropolitan area. . The building stock in the inner Lahore has not increased in over a hundred years.

Many areas of inner Lahore are in a very serious state of over –crowding and physical decline. Congestion and absence of basic services are common everywhere. Included among its problem are inadequate solid-waste management and a breakdown of city services. Moreover, the structures rises to three or four stories and are densely packed into tiny plots that average 40 square meters. More than half dwellings are occupied by single households each. The remaining has three or four households each. The average household size is nearly seven persons. One third of the population lives in single room units. The residual population is uniformly poor because the prosperous families have moved out of the inner Lahore to areas with more amenities. Poor conditions of housing stocks due to the low incomes of the inhabitants and to their lack of access to credit.

Many originally residential buildings are now converted into warehouses for the packaging of incoming goods. Due the narrow lanes of roads only space available for the breakdown of the bulk containers into packages is in the road, due to which traffic congestion outside the area increased and roads are full of crates, wagons, and mule carts. Garbage generation is also another problem in the inner Lahore, almost 60% of Lahore

Garbage is generated by inner Lahore and the poor neighborhoods. One of the major problems of traffic congestion is due to the pile up of garbage in the roadway which eliminates one lane of traffic. The physical conditions of inner Lahore itself are in a serious state of decay. The existing sewerage consists of a system of open drain into which all the refuse and the night soil are discharged. The water distribution network is very old, and the pipes that comprise it are all arranged through private connection.

METHOD

Since this research was generally taken on the varying issues of inner cities in Lahore Pakistan. The researchers in the preliminary visits entered the inner Lahore to find the prevailing living conditions in the respective residential-cum-commercial areas. Graphical analysis and spatial analysis is carried out by the researchers.

RESULT AND DISCUSSION

Spatial Analysis

The maps below shows the spatial analysis (the problems) being faced by the residents of inner cities of Lahore. It is observed that the increasing land-use of buildings is mixed, due to rapid conversion of residential buildings into commercial shops, though, the dominating land-use is still residential but, the aftermath of this situation can result in jeopardizing the privacy of its residents. It is also observed that there is lack of green spaces in Inner Lahore.

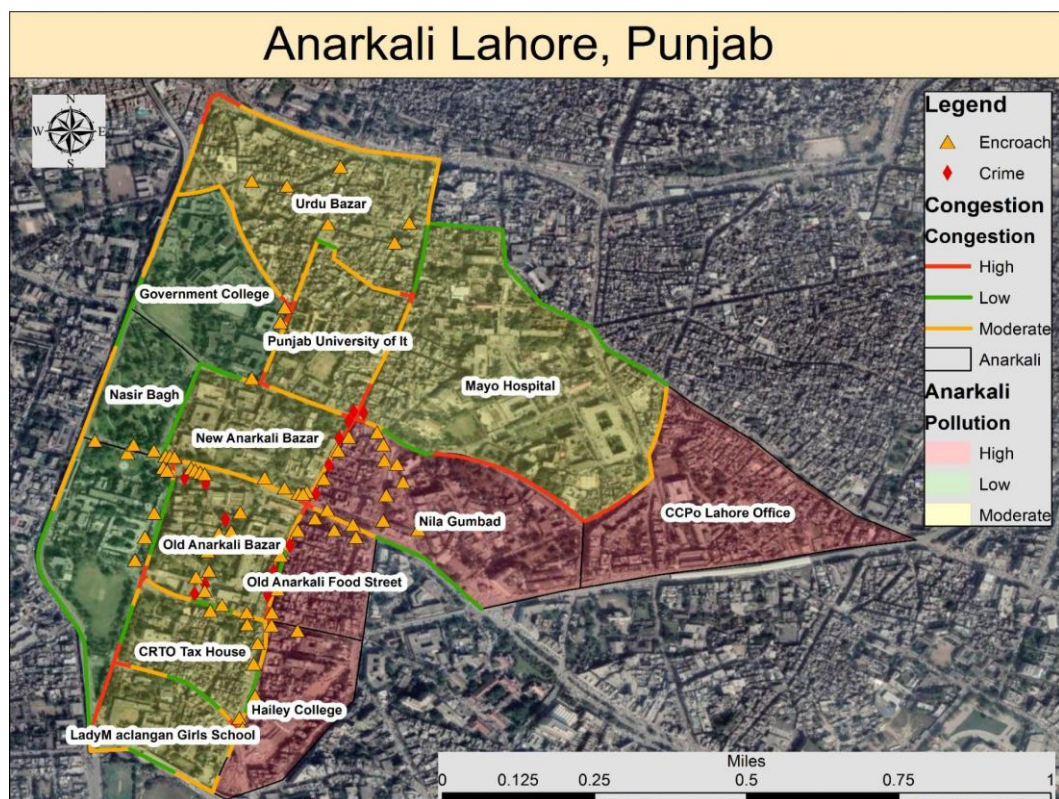


Figure: 1 Map showing problems in Anarkali

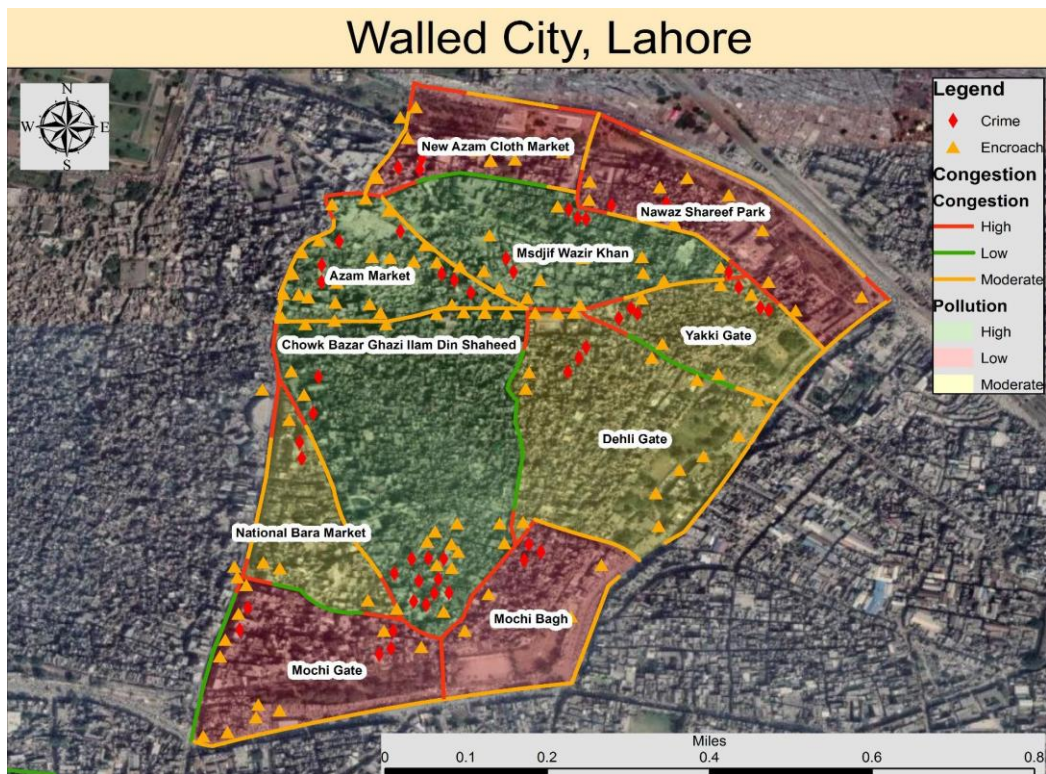


Figure: 2 Map showing problems in Walled City

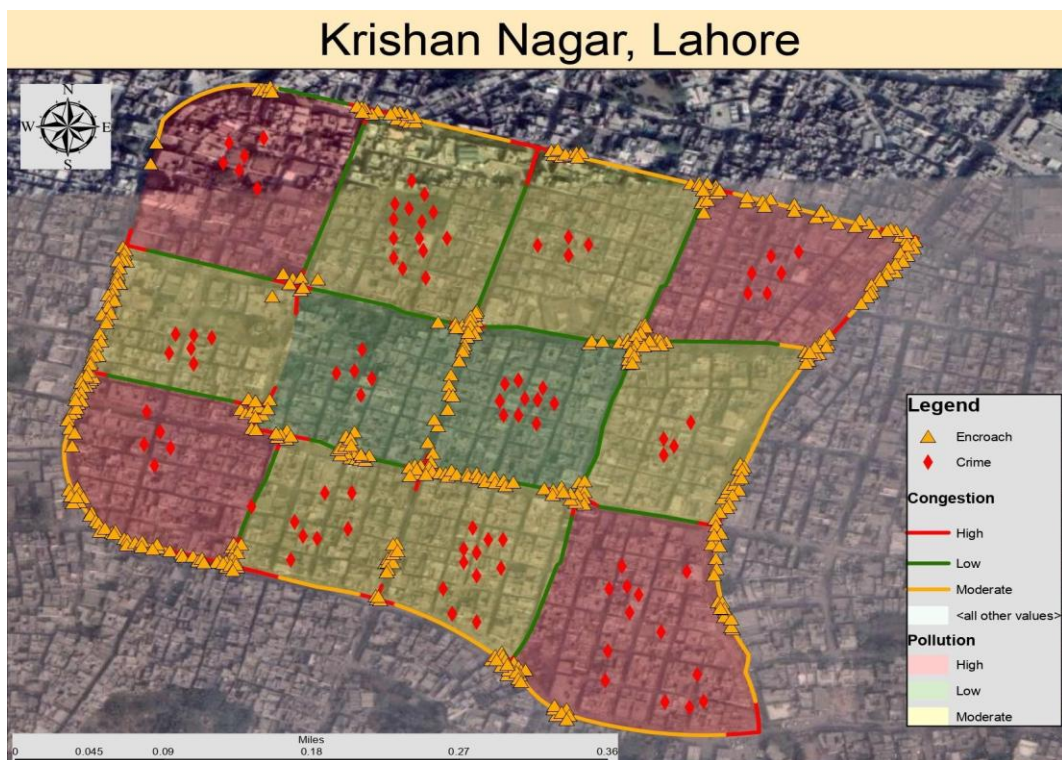


Figure: 3 Map showing problems in Krishan Nagar

Analysis of Buildings and Physical Infrastructure in Inner Lahore
Graphical Results

The results given in Figure shows that 73% buildings in Inner Lahore are residential, whereas 4% are commercial, while 21% buildings have mixed uses, 1.29% are public buildings, and whereas 0.22% are parks/green spaces and the rest 0.49% buildings are vacant.

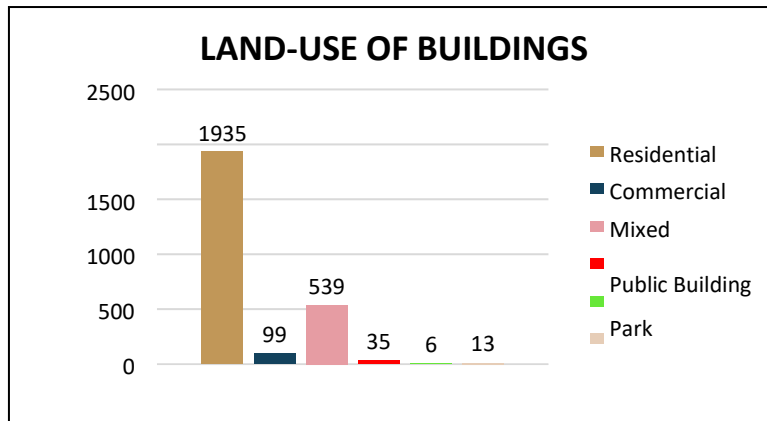


Figure: 4 Land-use of Building
 Source: Field Survey by Researchers

The results given below in Figure 5 shows that 13% buildings in Inner Lahore belong to Traditional British Period in which most buildings were built from 1929 – 1935, whereas 39% buildings were built before partition in which most buildings were constructed from 1940-1945, while 41% buildings are from post partition i.e. constructed mostly in the year from 1955 – 1965 and the remaining 7% buildings are built after 1980. It can be deduced from the map that the neighborhood of Inner Lahore is noteworthy because of its historical significance and has many buildings from Hindu – British period. Therefore, a theme base map is generated to indicate the buildings with high architectural merit.

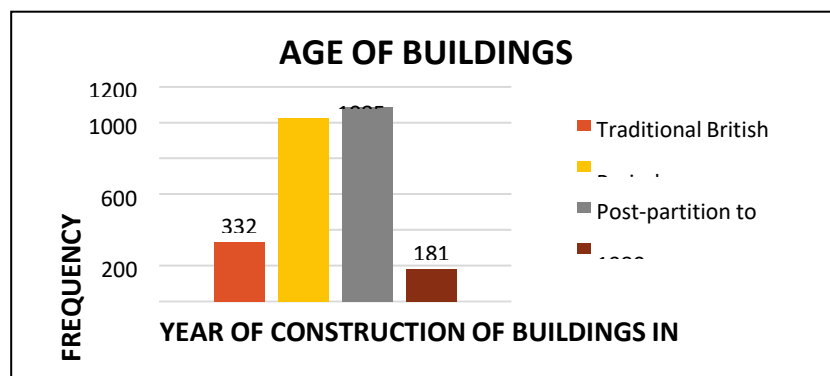


Figure: 5 Age of Buildings in Inner Lahore
 Source: Field Survey by Researchers

The outcomes illustrates that only 1% buildings in Inner Lahore are considered to be in excellent condition, whereas 11% buildings are in good condition, 78% buildings have average or normal condition and the rest 10% are in poor condition. The current condition of each building is analyzed on the basis of its physical structure and on the basis of the maintenance work. Thus, the map will also depict the buildings which are in extreme bad condition in which few buildings are about to fell due to leakages in lintels and roofs. The results given below shows that 55% buildings in Inner Lahore are in maintained condition in which little maintenance work like paints, furnishes etc. was done, whereas 9% buildings are rehabilitated i.e. with modifications in their physical structure, such as, lintels and roofs are renewed in these buildings, while 5% buildings are reconstructed in which some post – partition buildings lie which were built after 1965 and have good condition and the remaining 31% buildings are completely old and are without any protective status.

The results given below in Figure 6 specifies that around 53% of the neighbourhood faces temporary/moveable encroachment, whereas the rest 33% faces permanent/immovable encroachment particularly on inner streets. The figure enlightens the regions of temporary and permanent encroachment. According to field survey, it is analyzed that nearly all main commercial areas and major roads of Inner Lahore have been encroached upon by shopkeepers and vendors who occupy footpaths and open spaces thus, creating problems for commuters and pedestrians. The encroachers have set up stalls on Sadi Road and its adjacent Main Bazaar Inner Lahore and on many other places, whereas, permanent encroachment is also observed on secondary roads and streets.

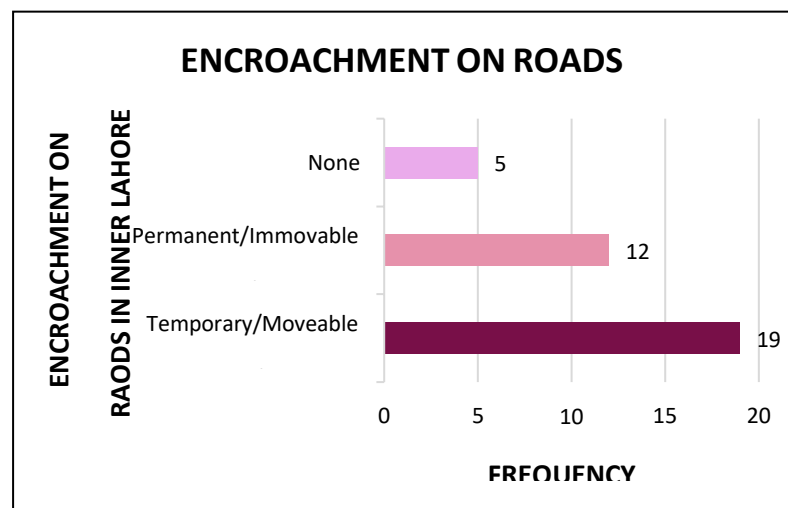


Figure: 6 Encroachment on Roads in Inner Lahore
Source: Field Survey by Researchers

The results explains that 42% of the neighborhood suffers from serious traffic congestion issues, including traffic blockage and jamming, whereas the rest 58% of the area has no traffic congestion. The figure shows that broached traffic congestion as a

serious subject with the help of thematic mapping. Roads marked with red have problems regarding traffic congestion particularly, these roads include Sanda Road, Shah alam road, inside Bhatti gate Alamgir Road, Main Bazar of Inner Lahore. Also, few roads are accident prone due to traffic collisions including Chohan Road, as the third most accident prone road as almost eight accidents in the past five years are recorded on this road because of noncompliance to traffic laws.

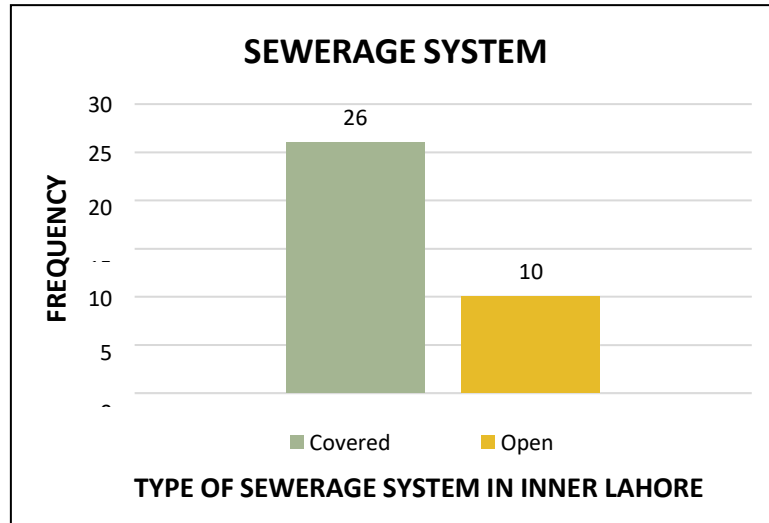


Figure: 7 Sewerage System in Inner Lahore
 Source: Field Survey by Researchers

The results given below in Figure 7 illustrates that 36% roads have solid waste problems including inner streets in which garbage is randomly thrown on roads while the rest 64% roads have no solid waste issues. The results indicates that 61% area has poor quality of water as a major problem of water supply, whereas the rest 39% area has intermittent supply of water.

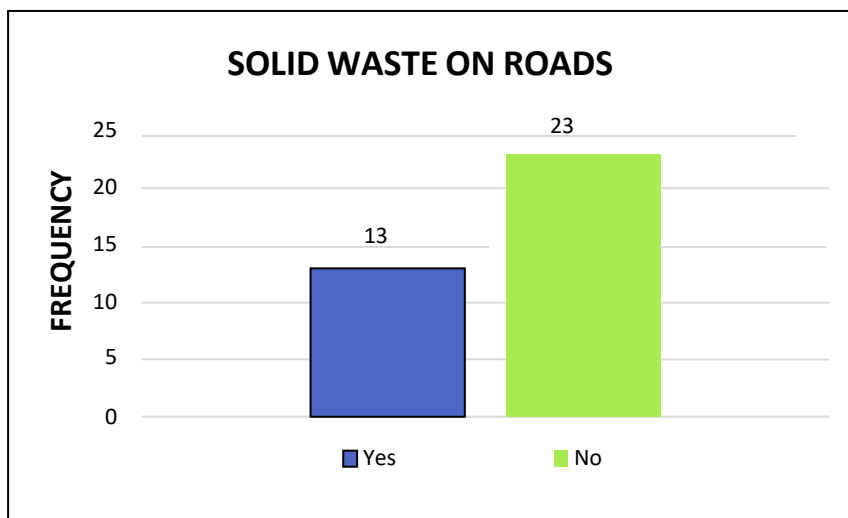


Figure : Solid Waste on Roads
 Source: Field Survey by Researchers

The results given below in figure 9 indicates that when residents are asked about the availability of any kind of public transport in their neighbourhood, 27% responded as yes that public transport including rickshaw is available near their residences whereas the rest 73% responded that there is no public transport facility such as public buses etc., available in their neighbourhood and they face many problems specifically when they have to travel out of the neighbourhood for their jobs and study purposes.

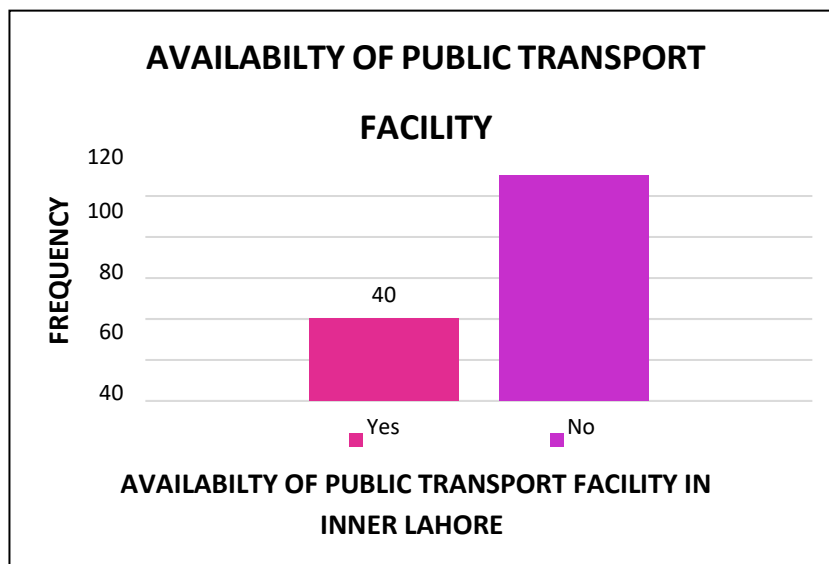


Figure 9: Availability of Public Transport
Source: Field Survey by Researchers

TABULAR ANALYSIS

Table 1: Beneficiary Households by Health Improving

Characteristics of HHs	Before Up-gradations & Conservations	After Up-gradations & Conservations	Total
Health Improving HHs	12	33	45
None Health Improving HHs	88	67	155
Total	100	100	200

Source: Survey and analysis by the researchers

Table shows how before and after up-gradation and conservation effects on the Health of the HHs and their satisfaction level have been changed. It was recorded that people have now see significant improvement in their health after the up-gradation and conservation work done at WCLA, and their satisfaction level increased from 12% to 33%. And their non-satisfaction level in Health after the conservation has been decreased from 88% to 67%. From above calculation it is clear that the health of Households have been improved after the up-gradation and conservation work done at Delhi Gate by WCLA.

Table 3: Beneficiary Households by Satisfaction

Characteristics of HHs	Before Up-gradations & Conservations	After Up-gradations & Conservations	Total
Satisfied HHs	10	92	102
None satisfied HHs	90	8	98
Total	100	100	200

Source: Survey and analysis by the researchers

Table 3 shows the satisfaction level of the Households before and after the Up- gradation work done by WCLA. It is analyzed that the household are more satisfied with the up-gradation work than the old condition of the inner Lahore satisfaction level has been increased from 10% to 92%. Similarly, non-satisfaction level has been reduced from 90% to 8%. It indicates that the Households are now more satisfied and feel better to live in Inner Lahore than before. There is a considerable increase in the satisfaction level of people after up-gradation and conservation.

Table 4: Beneficiary Shopkeepers by Business

Characteristics Of Shopkeepers	Before Up-gradations & Conservations	After Up-gradations & Conservations	Total
Beneficiary Business Shopkeepers	37	15	52
Non Beneficiary Shopkeepers	13	35	48
Total	50	50	100

Source: Survey and analysis by the researchers

Table 4 shows that how the up-gradation and conservation effect on the business of the shopkeepers. Considering the case of Shopkeepers, the results have been generated are totally opposite So, a decrease have been seen from 75% (37) to 30% (15), this shows that shopkeepers gets benefit in their businesses before the up-gradation and conservation and Similarly, there is considerably increase have been seen in Non-Beneficiary business Shopkeepers from 25% (13) to 70% (35). It indicates that business of shopkeepers have been reduced after the up-gradation and conservation. The rents of shops are considerably increased. Shopkeepers felt that their business have been significantly reduced and range of activities have been also decreased.

Table 5: Beneficiary shopkeepers by Employments

Characteristics of Shopkeepers	Before Up-gradations & Conservations	After Up-gradations & Conservations	Total
Beneficiary Shopkeepers	38	13	51
None Beneficiary Shopkeepers	12	37	49
Total	50	50	100

Source: Survey and analysis by the researchers

Table 5 shows that how the up-gradation and conservation work effects on employment of shopkeepers. It was reported that there have been a decrease in the beneficiary level of shopkeepers regarding the employment after up-gradation and conservation work. It has been decreased from 76% (38) to 25% (13). Similarly an increase has been seen in the non-beneficiary level of shopkeepers regarding employments from 24% (12) to 75% (37).

Table 6: Beneficiary Shopkeepers by Trade Satisfaction

Characteristics Of Shopkeepers	Before Up-gradations & Conservations	After Up-gradations & Conservations	Total
Trade satisfied Shopkeepers	34	13	47
None satisfied Shopkeepers	16	37	53
Total	50	50	100

Source: Survey and analysis by the researchers

Table 6 shows how before and after up-gradation and conservation effects on the trade of the shopkeepers and their satisfaction level about it. It was recorded that people have seen reduction in their trade after the up-gradation and conservation work done by WCLA, and their satisfaction level had been reduced from 67% (34) to 26% (13) after conservation and up-gradation. And their non-satisfaction level in trade after the conservation has been increased from 33% (16) to 74% (37). It indicates that after up-gradation and conservation shopkeeper's satisfaction level have been considerably reduced. Their income level has been reduced and rents of shops have been increasing day by day. Moreover, number of costumers also decreased. So, it is cleared that up-gradation and conservation put a negative impact on shopkeepers.

Table 7: Beneficiary Tourists by Accessibility

Characteristics of Tourists	Before Up-gradations & Conservations	After Up-gradations & Conservations	Total
Beneficiary tourists	4	15	19
Non Beneficiary tourists	16	5	21
Total	20	20	40

Source: Survey and analysis by the researchers

Table 7 shows the satisfaction level of the tourists by accessibility to WCL. It was reported that before up-gradation and conservation tourist had to face difficulties to access to the inner Lahore but after up-gradation and conservation their satisfaction level have been improved and increased from 20% (04) to 76% (15). Similarly numbers of non-beneficiary tourists have been considerably reduced from 80% (16) to 24% (04). It indicates that after up-gradation and conservation tourist have an easy access to Inner Lahore and their satisfaction level has been increased.

Table 8: Beneficiary Tourists by Comfort

Characteristics of Tourists	Before Up-gradations & Conservations	After Up-gradations & Conservations	Total
Beneficiary comfortable tourists	5	15	20
None Beneficiary tourists	16	4	20
Total	20	20	40

Source: Survey and analysis by the researchers

Table 8 shows that how tourists feel now while entering and walking inside the Inner Lahore Delhi Gate. So, it was reported that their comfortable level while moving in the Inner Lahore Delhi gate have significantly been improved and increased from 21% (05) to 76% (15). Whereas, their discomfort level has been reduced from 79% (16) to 24% (04). It shows those tourists are now feeling more comfortable to move inside Delhi Gate than before the up-gradation and conservation work done by WCLA.

CONCLUSSION AND RECOMMENDATION

The researchers came to the conclusion that for the first time ever in Pakistan this type of work has been done at mass level for preservation of heritage. It unlocks the tourist industry and enhanced the tourist market of Pakistan. No doubt, the work that has been done is admirable but if looking at the other part of the story this also decreased the threshold value of the shopkeepers and also the local economy of the respective area. It is not always right to say that conservation and up-gradation of heritage always brings sustainable development for the country but it also brings unsustainability in some parts of the local economy. So, researcher came to the conclusion that in cost of increasing the global economy in the form of tourists we reducing out local economy.

Beside the side effects of this work, there are some good points of this project should have been highlighted that through the good governance of Government and the local people first time ever in history of Pakistan heritage have been preserved at such a vast level that reflects the glory of the nation. These have been depending upon the mutual participation of the government with the locals. The development plan for this work of conservation and up-gradation in Delhi gate is seems to be sustainable if the project will continue to be based upon good governance because bad governance always lead to unsustainability.

Preservation of heritage is not only preserving the natural importance of the country at local level but also at global level. So, conservation of the special areas of the country particularly the special nodes of Inner Lahore should be done in such a way that it enhanced the beauty of Lok Virsa without compromise the need of the other people whose roots and spirits are attached with the heritage for many years.

REFERENCES

- Wakely, Patric. I et al. 1976, Urban Housing Strategies: Education and Realization, Pitman publishing Limited.
- World Bank/ PEPAC, Walled City of Lahore, LDA, Lahore
- Judd, Frank, 1982, The Brandt Report: Where we do go from here, Centre for Development Studies, University College of Swansea.
- Flint, D. 1987, Progress and Changes in Developing Countries, Oxford, Blackwell
- Miller, Delbert, C. 1991, Handbook of Research Design and Social Measurement, Sage Publication, London
- Weber, K.E; Dhungel, B; Dhungal, Y.N; Dias, H.N; Khan, M and Setty, E.D. 1986, Rural Development in Pakistan: Course Handbook and Survey Report, HSD Manual Number 4, Division of Human Settlements, AIT, Bangkok, Thailand.
- Sahni, Pardeep and Aryabandu, MadhaviMalaalgoda Ed. 2003, Disaster Risk Reduction in South Asia , Prentice Hall of India Ltd, New Delhi
- Islam, Q. 1975, BSc Thesis, CRP Department, UET, Lahore
- Zaidi, S.S.H. 1990, Low-Income Housing in Pakistan: A Progressive Development Policy and Practice in Lahore, Centre for Urban and Regional Studies, School of Public Policy, The University of Birmingham, June 1990. PhD Thesis
- Ahmad, I. Eid, Saad. Mehmood, S. 1992. BS Thesis, Urban Villagers in the Perception of Development and Modernization, CRP Department, UET, Lahore
- Ajmal, U. Ashfaq, A. Ashfaq, F. Ashfaq, W. Sattar, A. Rahman, A. Islam, Q. Apr – Jun 2016. Good Governance to Generate Effective Master Plan through TMA Aziz Bhatti Town, Lahore. THE ENVIRON MONITOR Journal of Environmental Sciences, Technologies and Engineering, XVI (No. 4-6). 51-56